

PART OF THE NW. 1/4, OF SECTION 14, T.5N., R.3W., S.L.B. & M.

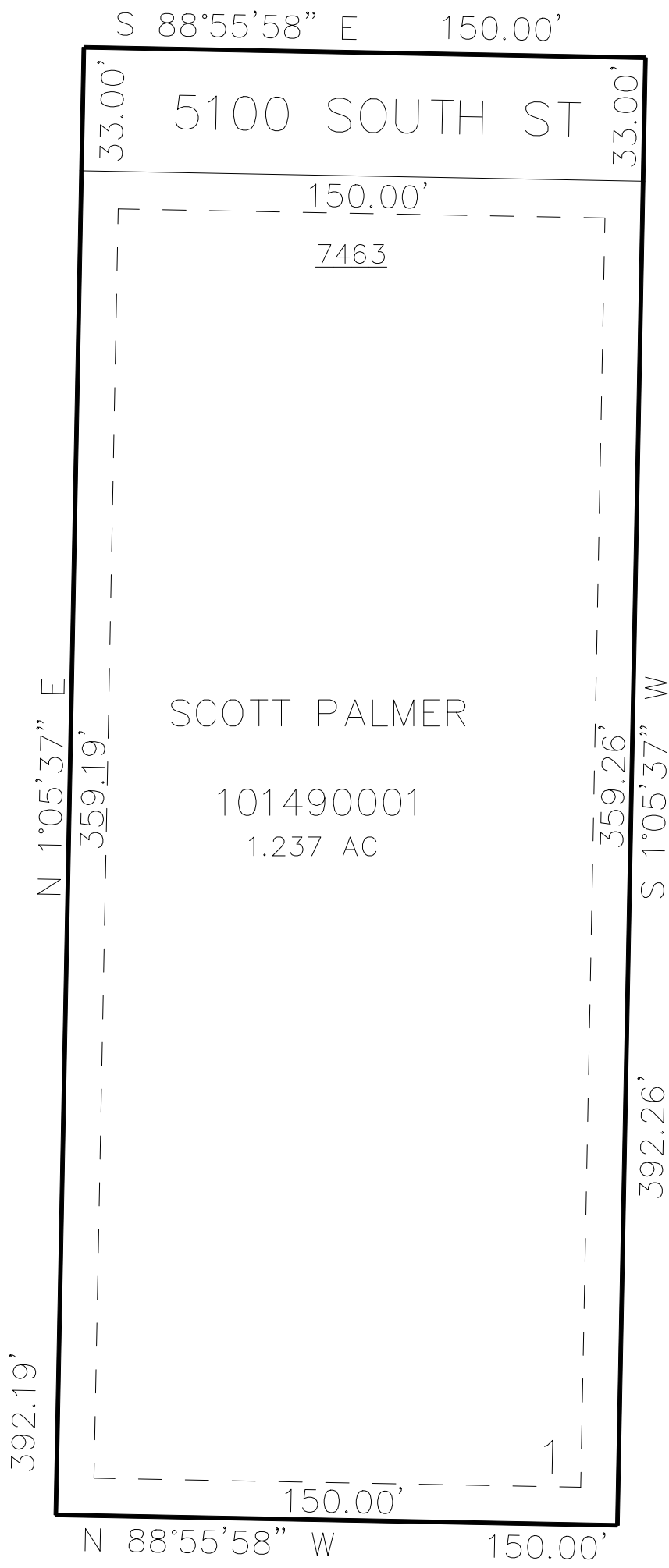
WOODWARD RANCH

IN HOOPER CITY

TAXING UNIT: 31

SCALE 1" = 40'

SEE PAGE 17



SEE PAGE 20

SEE PAGE 17

10' UTILITY & DRAINAGE EASEMENTS EACH
SIDE OF PROPERTY LINES AS INDICATED
BY DASHED LINES EXCEPT AS OTHERWISE
SHOWN.

SEE PAGE 17

FOR COMPLETE ENG DATA SEE
ORIGINAL DEDICATION PLAT IN
BOOK 77, PAGE 67 OF RECORDS.