

PART OF THE SW. 1/4, OF SECTION 15, T.6N., R.3W., S.L.B. & M.

172

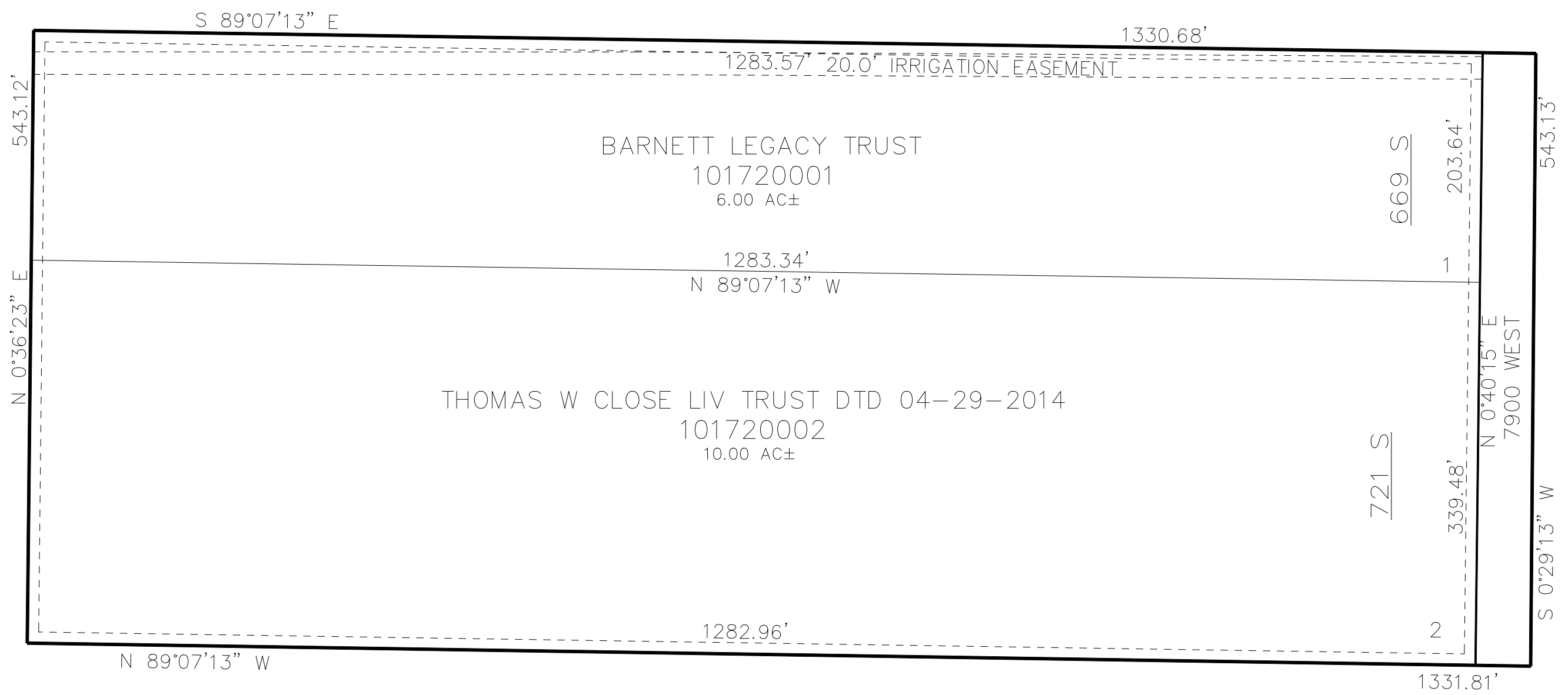
TOM CLOSE SUBDIVISION

IN WEBER COUNTY

TAXING UNIT: 389

SCALE 1" = 100'

SEE PAGE 37



SEE PAGE 37

10' UTILITY & DRAINAGE EASEMENTS EACH
SIDE OF PROPERTY LINES AS INDICATED
BY DASHED LINES EXCEPT AS OTHERWISE
SHOWN.

FOR COMPLETE ENG DATA SEE
ORIGINAL DEDICATION PLAT IN
BOOK 86, PAGE 72 OF RECORDS.