

N.W. 1/4  
SECTION 3, T.6N., R.1W., S.L.B. & M.  
IN NORTH OGDEN CITY & WEBER COUNTY

TAXING UNIT: 03,10,42,58,66

SCALE 1" = 200'

SEE BOOK 17  
PAGE 82-3

SEE BOOK 17 PAGE 99

PREFIX: 11-002

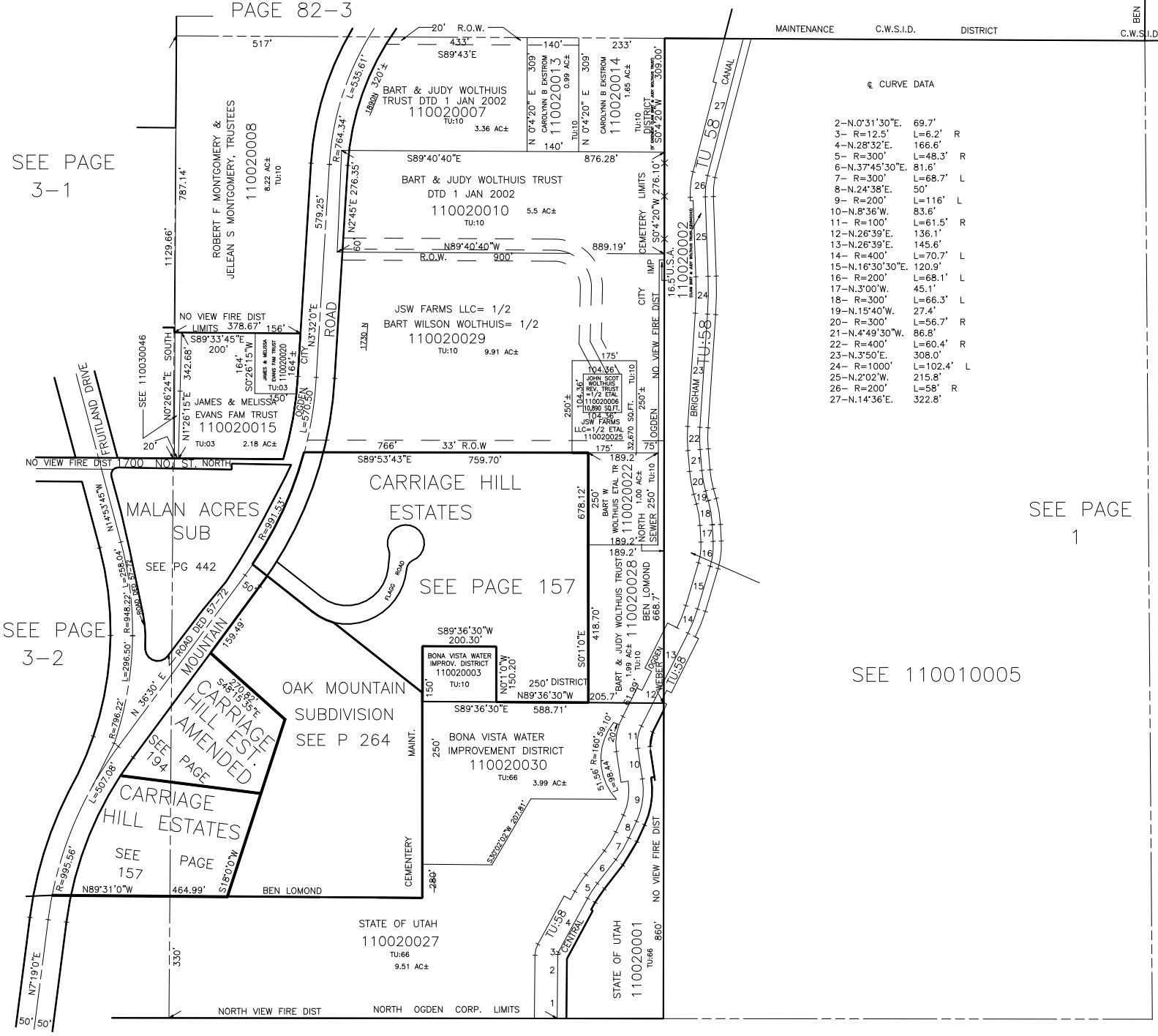
BEN LOMOND  
C.W.S.I.D.

SEE PAGE  
3-1

SEE PAGE  
3-2

SEE PAGE  
1

SEE 110010005



⊕ CURVE DATA

2-N.0°31'30"E.	69.7'
3-R=12.5'	L=6.2' R
4-N.28°32'E.	166.6'
5-R=300'	L=48.3' R
6-N.37°45'30"E.	81.6'
7-R=300'	L=68.7' L
8-N.24°38'E.	50'
9-R=200'	L=116' L
10-N.8°36'W.	83.6'
11-R=100'	L=61.5' R
12-N.26°39'E.	136.1'
13-N.26°39'E.	145.6'
14-R=400'	L=70.7' L
15-N.16°30'30"E.	120.9'
16-R=200'	L=68.1' L
17-N.300°W.	45.1'
18-R=300'	L=66.3' L
19-N.15°40'W.	27.4'
20-R=300'	L=56.7' R
21-N.4°49'30"W.	86.8'
22-R=400'	L=60.4' R
23-N.3°50'E.	308.0'
24-R=1000'	L=102.4' L
25-N.2°02'W.	215.8'
26-R=200'	L=58' R
27-N.14°36'E.	322.8'

NOTE: DATA OF MOUNTAIN ROAD FROM  
COUNTY SURVEYOR'S MAPS, MARCH 1963

SEE PAGE 1

\*FOR TAX PURPOSES ONLY\*

VLG 8-96