

S.E. 1/4  
SECTION 4, T.6N., R.1W S.L.B. & M

IN WEBER COUNTY & OGDEN CITY

SCALE 1" = 200'

TAXING UNIT: 14,23,25

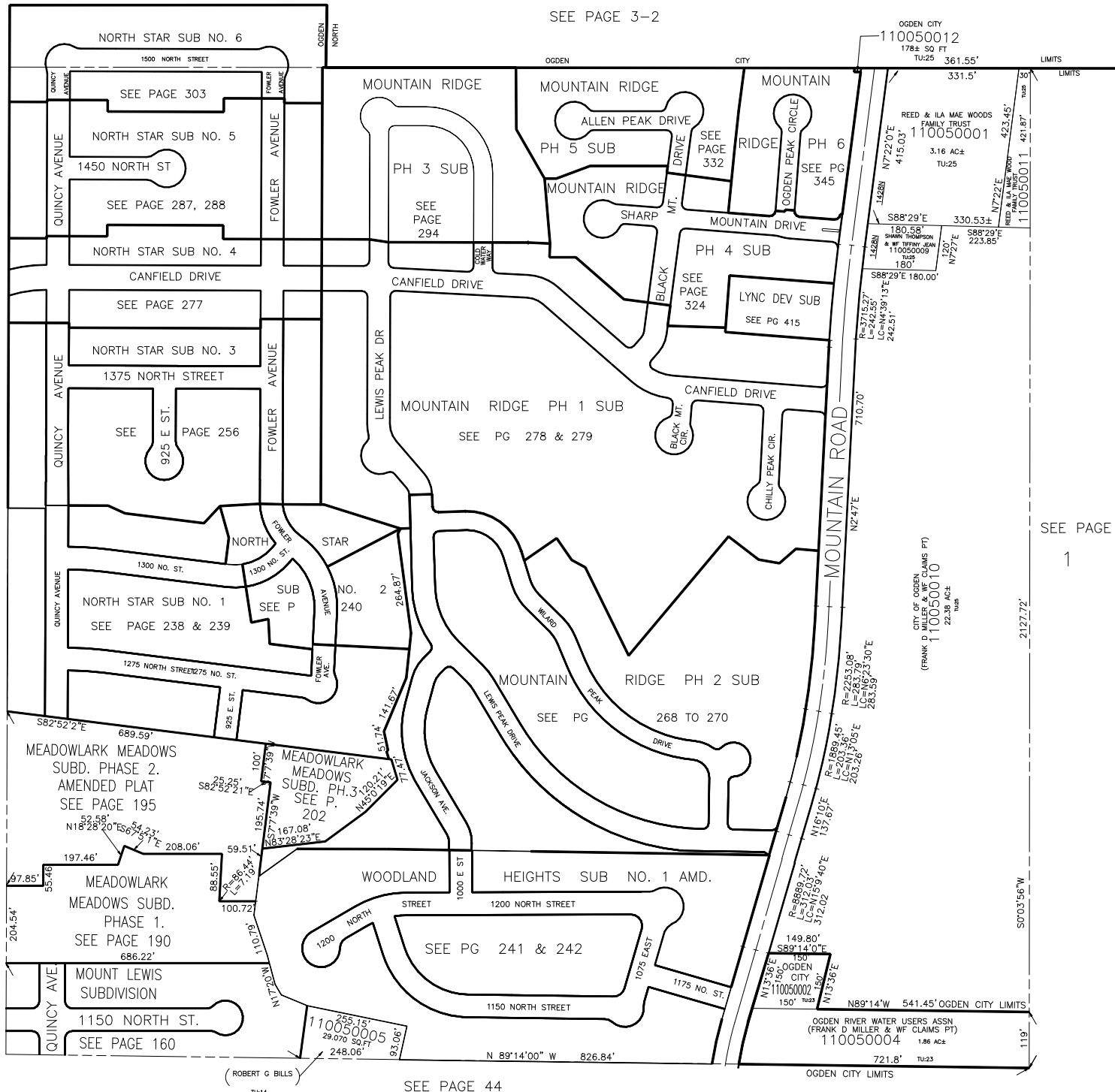
SEE PAGE 3-3

PREFIX : 11-005

SEE PAGE 3-2

SEE PAGE  
6

SEE PAGE  
1



(ROBERT G. BILLS)  
TU-14

SEE PAGE 44

\*FOR TAX PURPOSES ONLY\*