

PART OF THE S.W. 1/4 OF SEC. 4 & S.E. 1/4, OF SEC. 5, T.6N., R.1W., S.L.B. & M.

13

EYRIE MEADOW SUBDIVISION NO.2

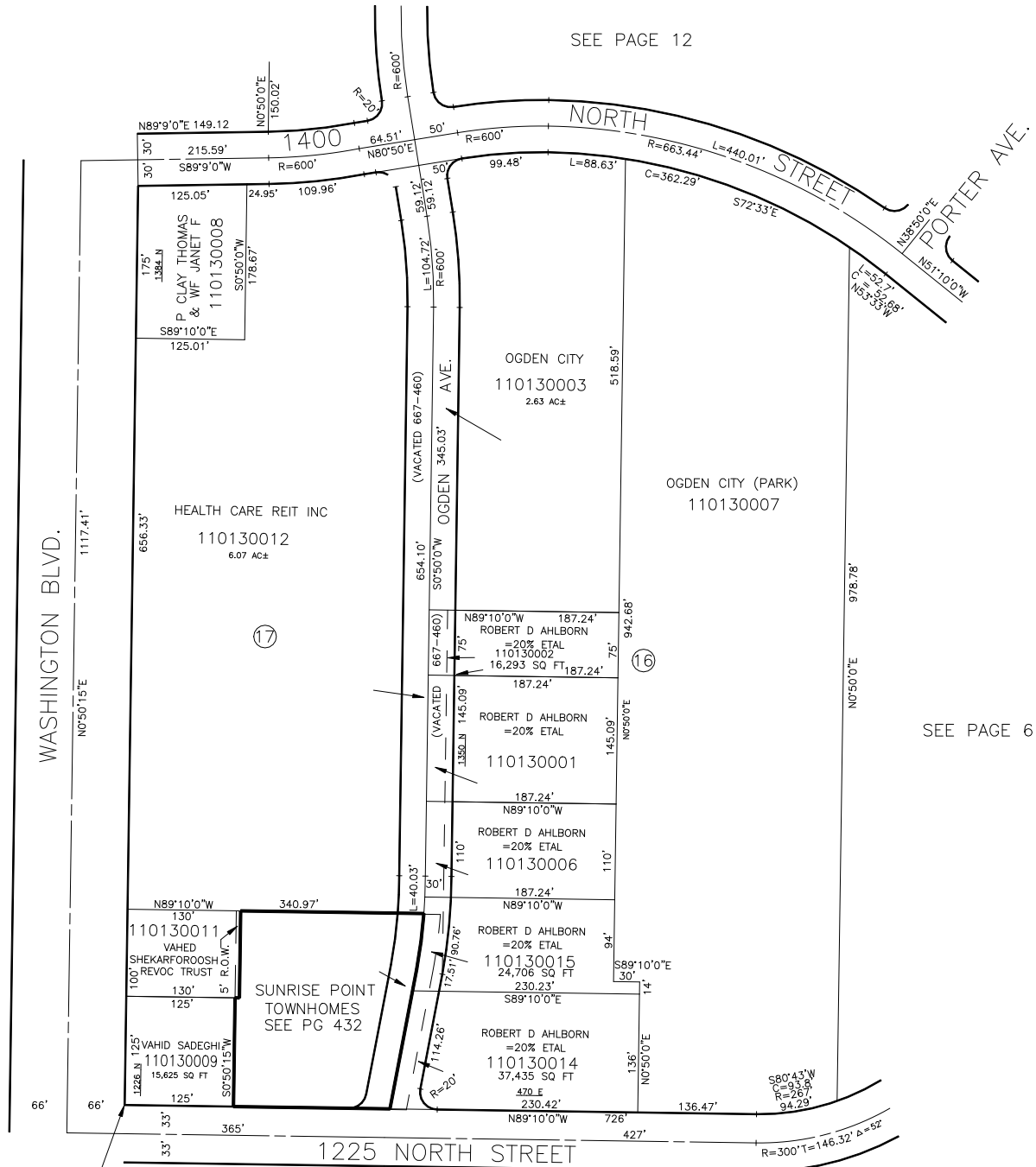
BLOCKS 16 & 17

TAXING UNIT: 14

IN OGDEN CITY

SCALE 1" = 100'

SEE PAGE 12



SEE PAGE 16

SEE PAGE 6

SEE PAGE 16-1

POINT OF BEGINNING
NORTH 85°1' & N.89°10'W.
594.94' FROM S.E. CORNER
OF SECTION 5

FOR TAX PURPOSES ONLY

D.A. 4-60