

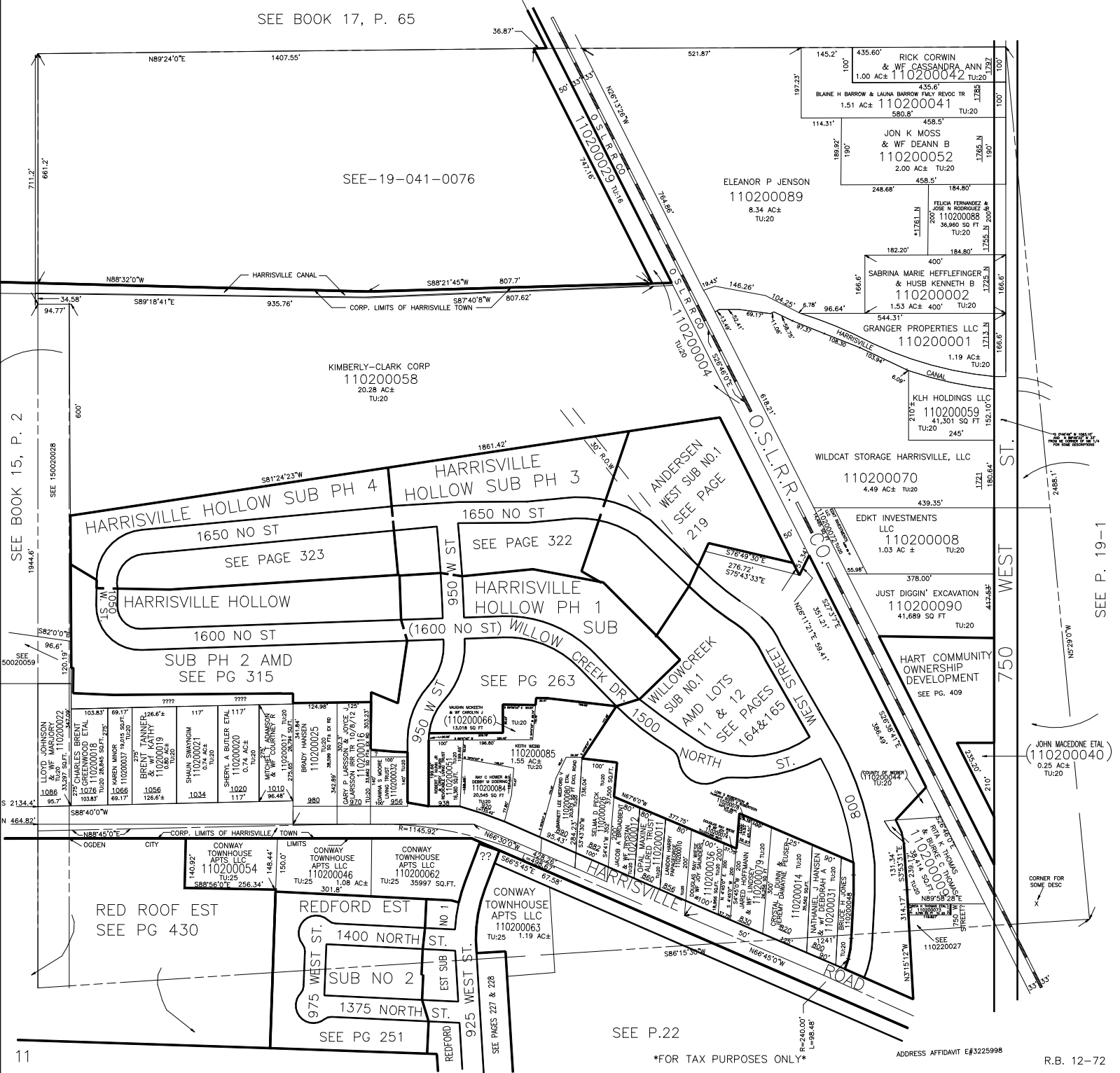
TAXING UNIT: 16,17,20,25

N.W. 1/4
SECTION 6, T.6N.,R.1W., S.L.B.&M.

IN HARRISVILLE CITY IN WEBER COUNTY
SCALE 1" = 200'

SEE BOOK 17, P. 65

SEE-19-041-0076



SEE BOOK 15, P. 2

SEE 50020059

11

SEE P. 19-1

FOR TAX PURPOSES ONLY

ADDRESS AFFIDAVIT E#3225998

R.B. 12-72