

N.E. 1/4  
SECTION 8, T.6N., R.1.W., S.L.B., & M.  
HARRISVILLE CITY, OGDEN CITY & WEBER COUNTY

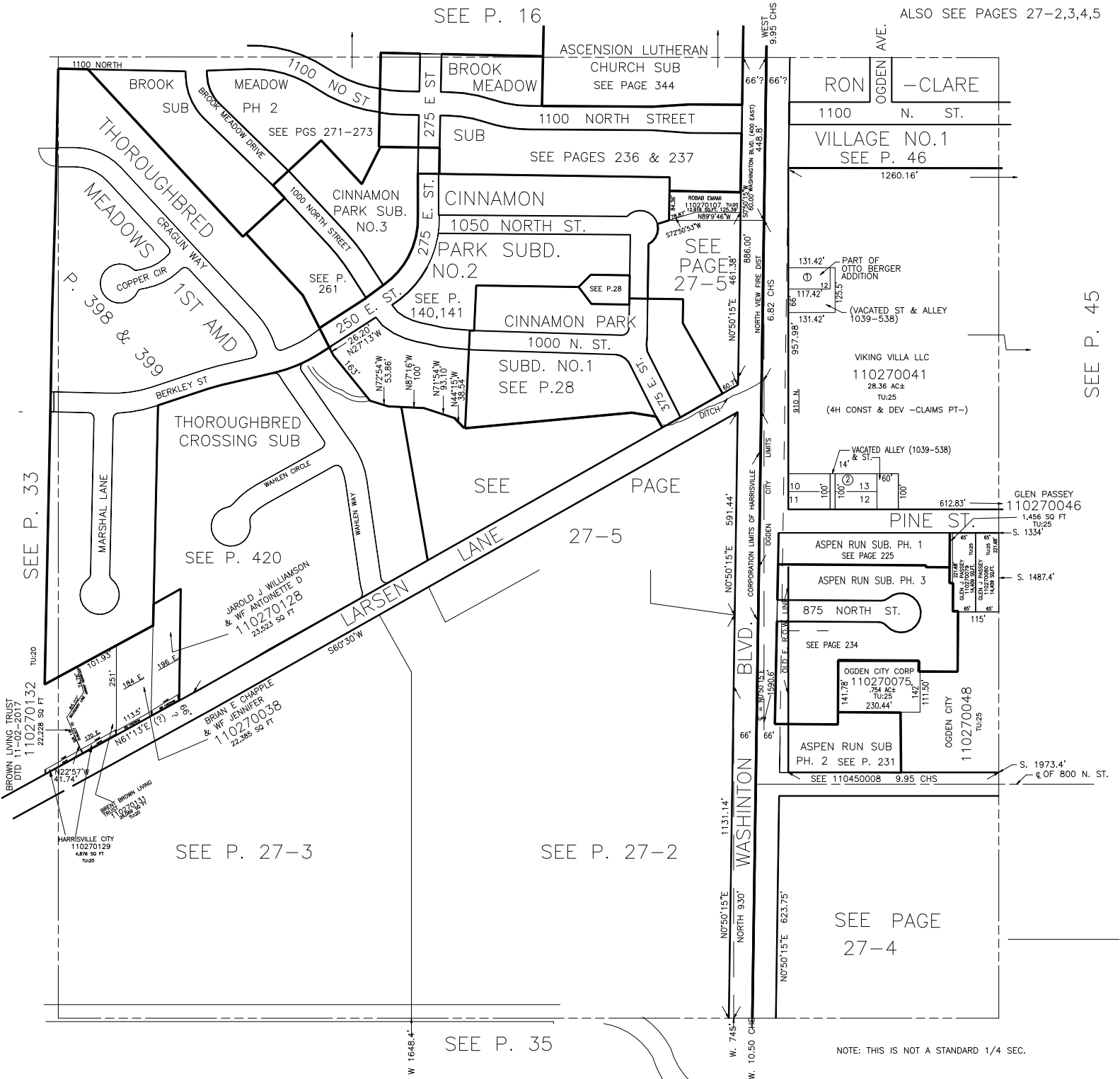
TAXING UNITS: 17, 20, 25

SCALE 1" = 200'

PREFIX : 11-027

SEE P. 16

ALSO SEE PAGES 27-2,3,4,5



NOTE: THIS IS NOT A STANDARD 1/4 SEC.