

PART OF N.W. 1/4 SECTION 9, T.6N., R.1W., S.L.B. & M.

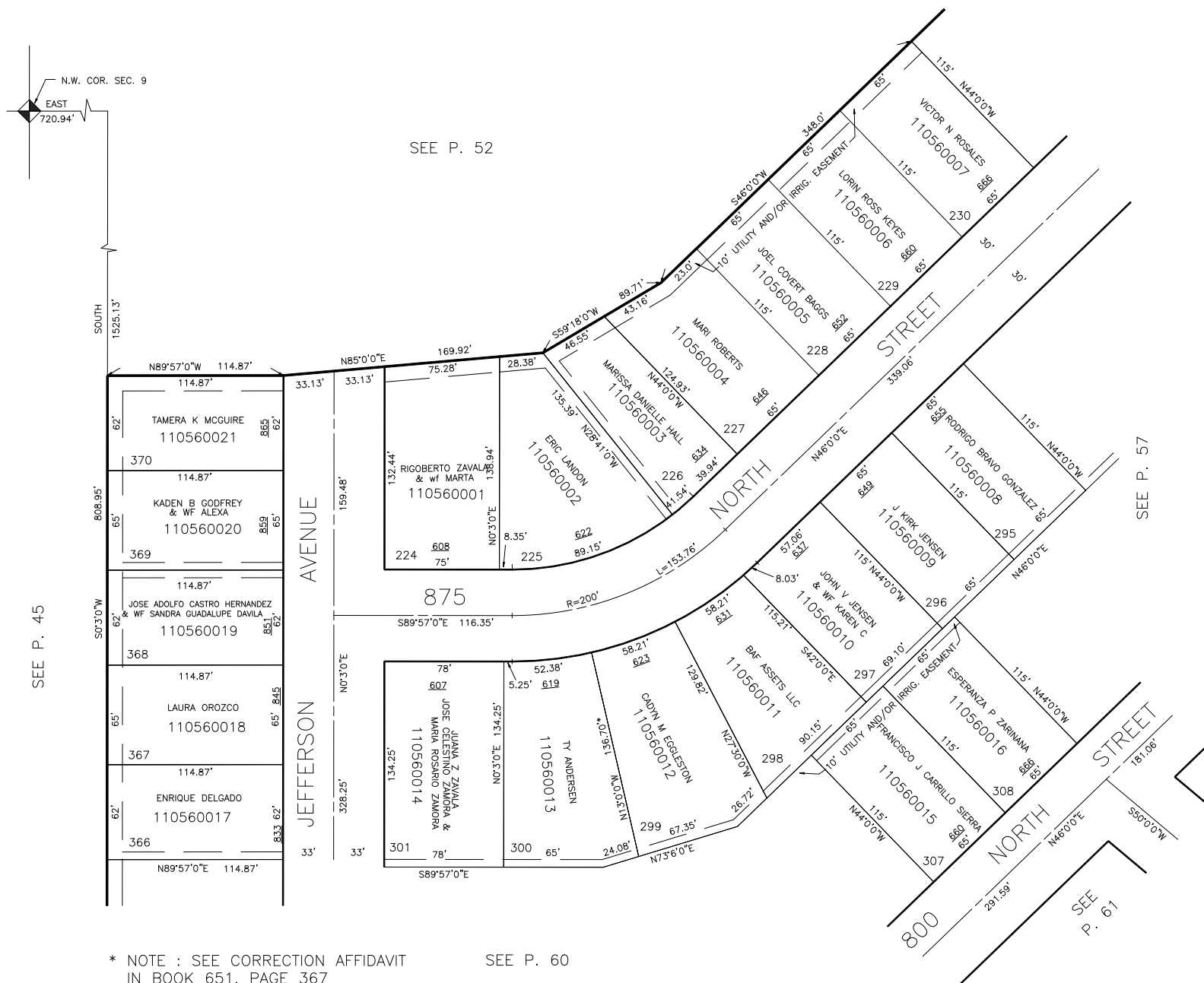
RON-CLARE VILLAGE NO. 3

LOTS 224-230, 295-301, 307-308, & 366-370

TAXING UNIT: 25

IN OGDEN CITY

SCALE 1" = 50'



* NOTE : SEE CORRECTION AFFIDAVIT
IN BOOK 651, PAGE 367

SEE P. 60

FOR COMPLETE ENG DATA SEE
ORIGINAL DEDICATION PLAT IN
BOOK 12, PAGE 25 OF RECORDS.

FOR TAX PURPOSES ONLY

CRR 1-99