

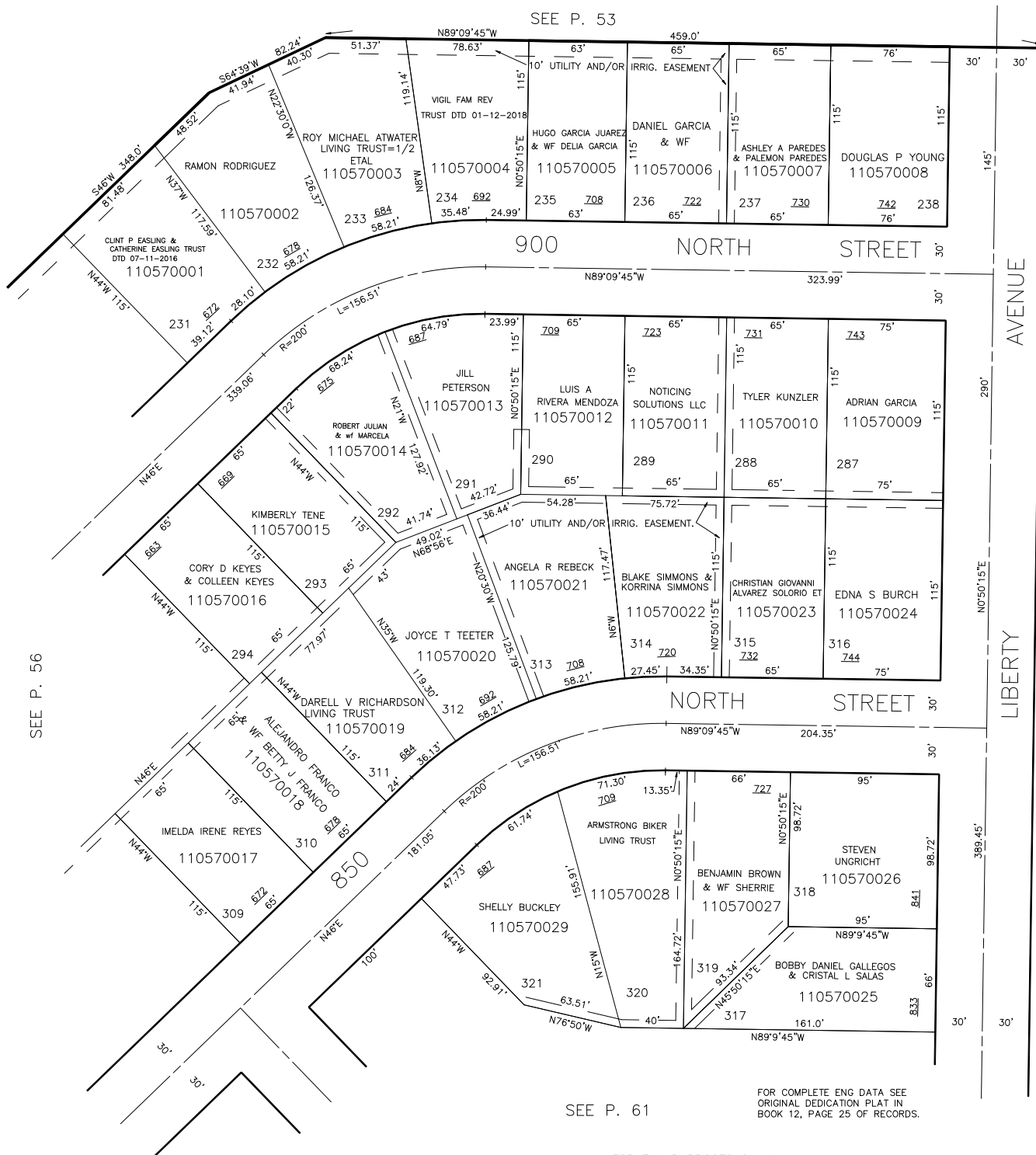
PART OF N.W. 1/4 SECTION 9, T.6N., R.1W., S.L.B. & M.

RON-CLARE VILLAGE NO. 3
LOTS 231-238, 287-294, & 309-321

TAXING UNIT: 25

IN OGDEN CITY
SCALE 1" = 50'

SEE P. 53



SEE P. 58

FOR COMPLETE ENG DATA SEE
ORIGINAL DEDICATION PLAT IN
BOOK 12, PAGE 25 OF RECORDS.

SEE P. 61

FOR TAX PURPOSES ONLY

CRR 1-99