

PART OF N. 1/2 OF SECTION 9, T.6N., R.1W., S.L.B. & M.

RON-CLARE VILLAGE NO. 5

LOTS 482-493, 564-587, & 599-621

TAXING UNIT: 25

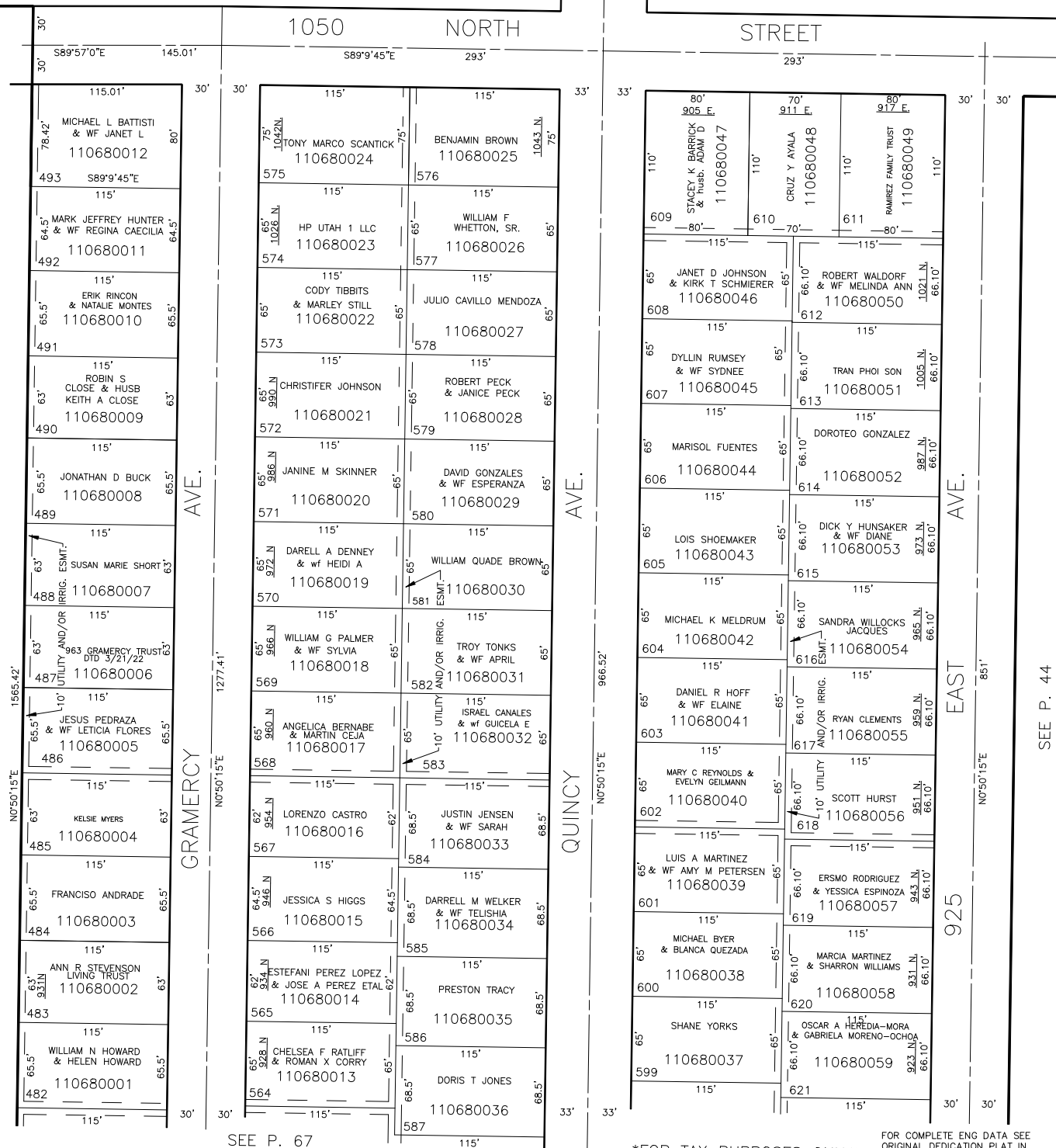
IN OGDEN CITY

SEE P. 69

SCALE 1" = 60'

SEE P. 55

SEE P. 54



SEE P. 44

FOR TAX PURPOSES ONLY

FOR COMPLETE ENG DATA SEE
ORIGINAL DEDICATION PLAT IN
BOOK 12, PAGE 45 OF RECORDS.

CRR 1-99