

PART OF N. 1/2 SECTION 9, T.6N., R.1W., S.L.B. & M.

RON-CLARE VILLAGE NO. 5

LOTS 494-503 & 526-547

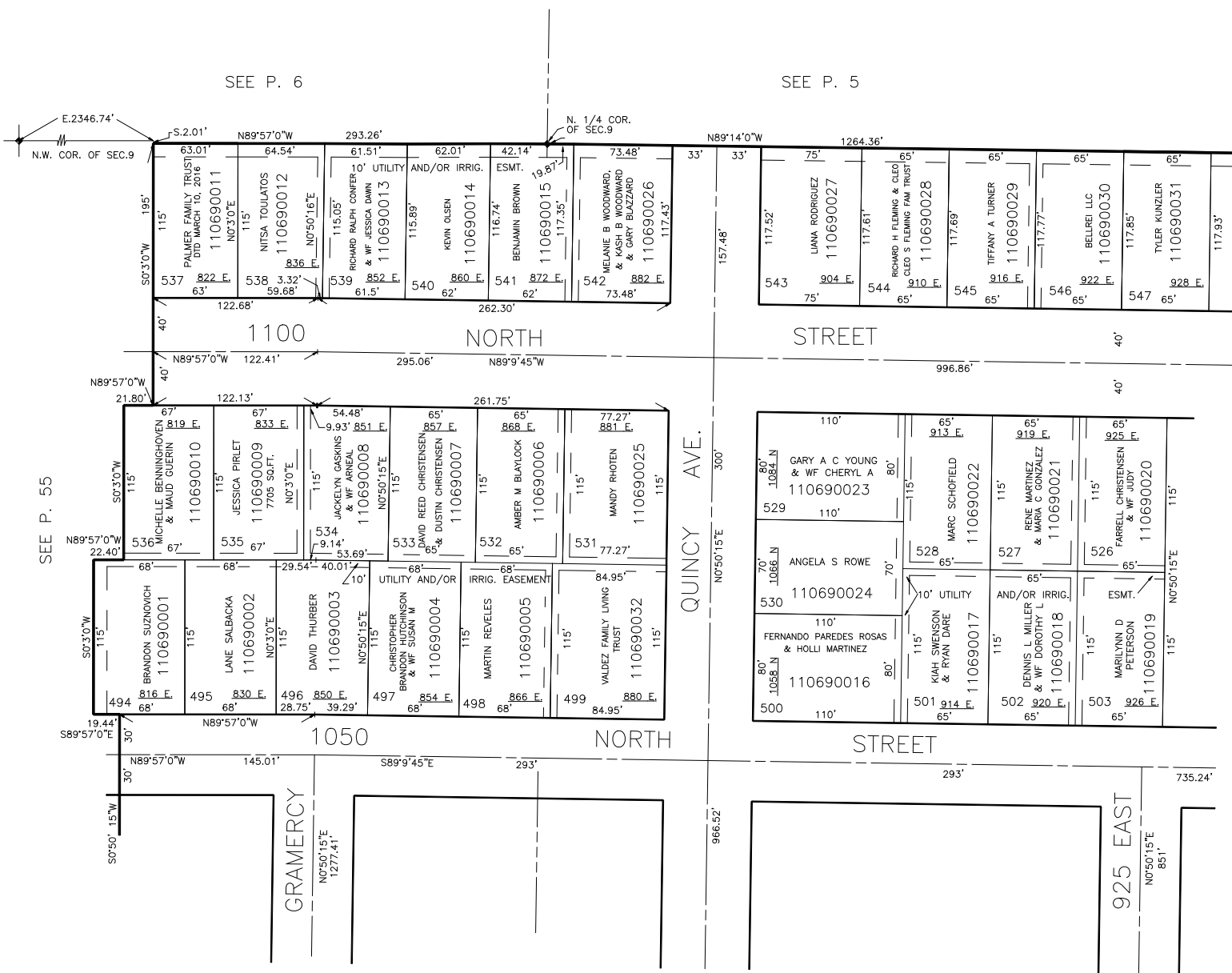
TAXING UNIT: 25

IN OGDEN CITY

SCALE 1" = 60'

SEE P. 6

SEE P. 5



SEE P. 68

FOR COMPLETE ENG DATA SEE
ORIGINAL DEDICATION PLAT IN
BOOK 12, PAGE 45 OF RECORDS.

FOR TAX PURPOSES ONLY