

PART OF S.E. 1/4 OF SECTION 9, T.6N., R.1W., S.L.B. & M.  
MOUNTAIN CREST SUBDIVISION – UNIT 1

IN OGDEN CITY

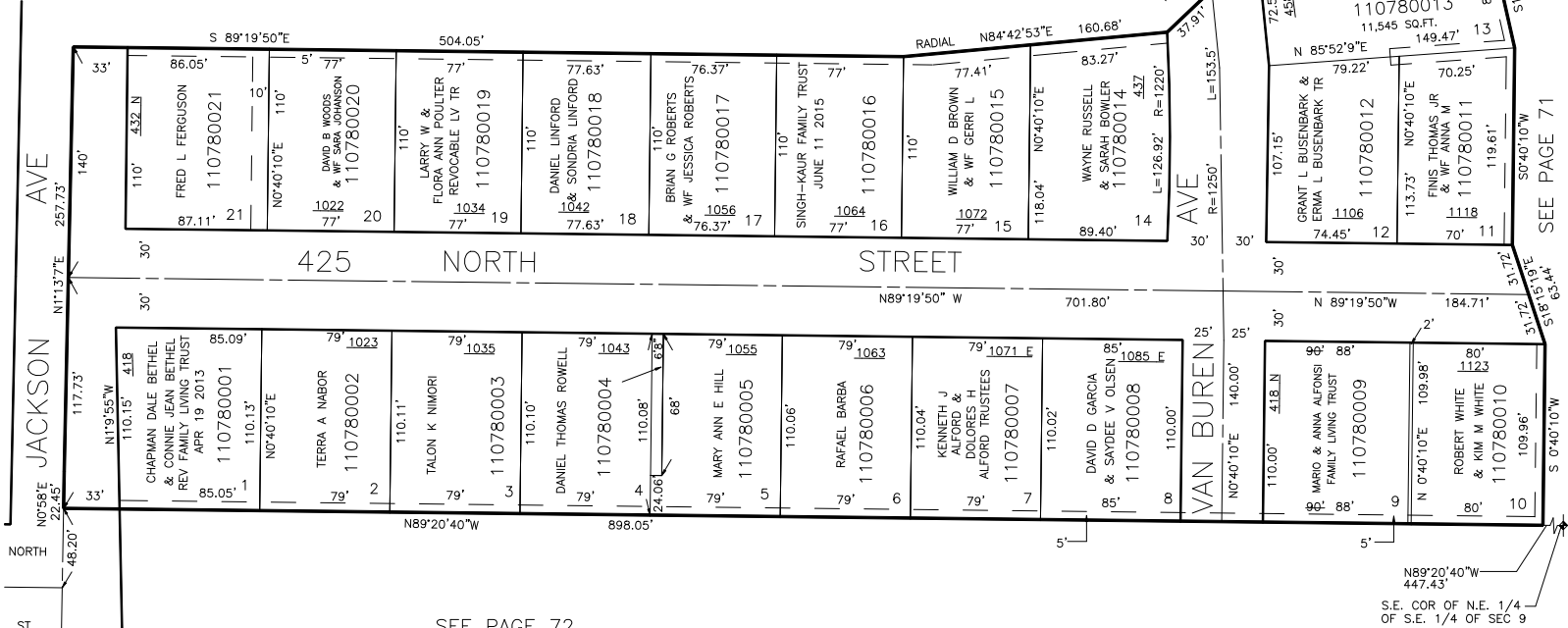
TAXING UNIT: 25

SCALE 1" = 60'

78

SEE  
PAGE  
71

SEE PAGE 79



SEE PAGE 72

FOR COMPLETE ENG DATA SEE  
ORIGINAL DEDICATION PLAT IN  
BOOK 12, PAGE 49 OF RECORDS.

NOTE: PUBLIC UTILITY EASEMENTS  
SHOWN BY DASHED LINES.  
NOTE: THIS IS AN OWNERSHIP PLAT. FOR  
COMPLETE ENGINEERING DETAIL SEE ORIGINAL (12-49).

\*FOR TAX PURPOSES ONLY\*

CRR 1-99