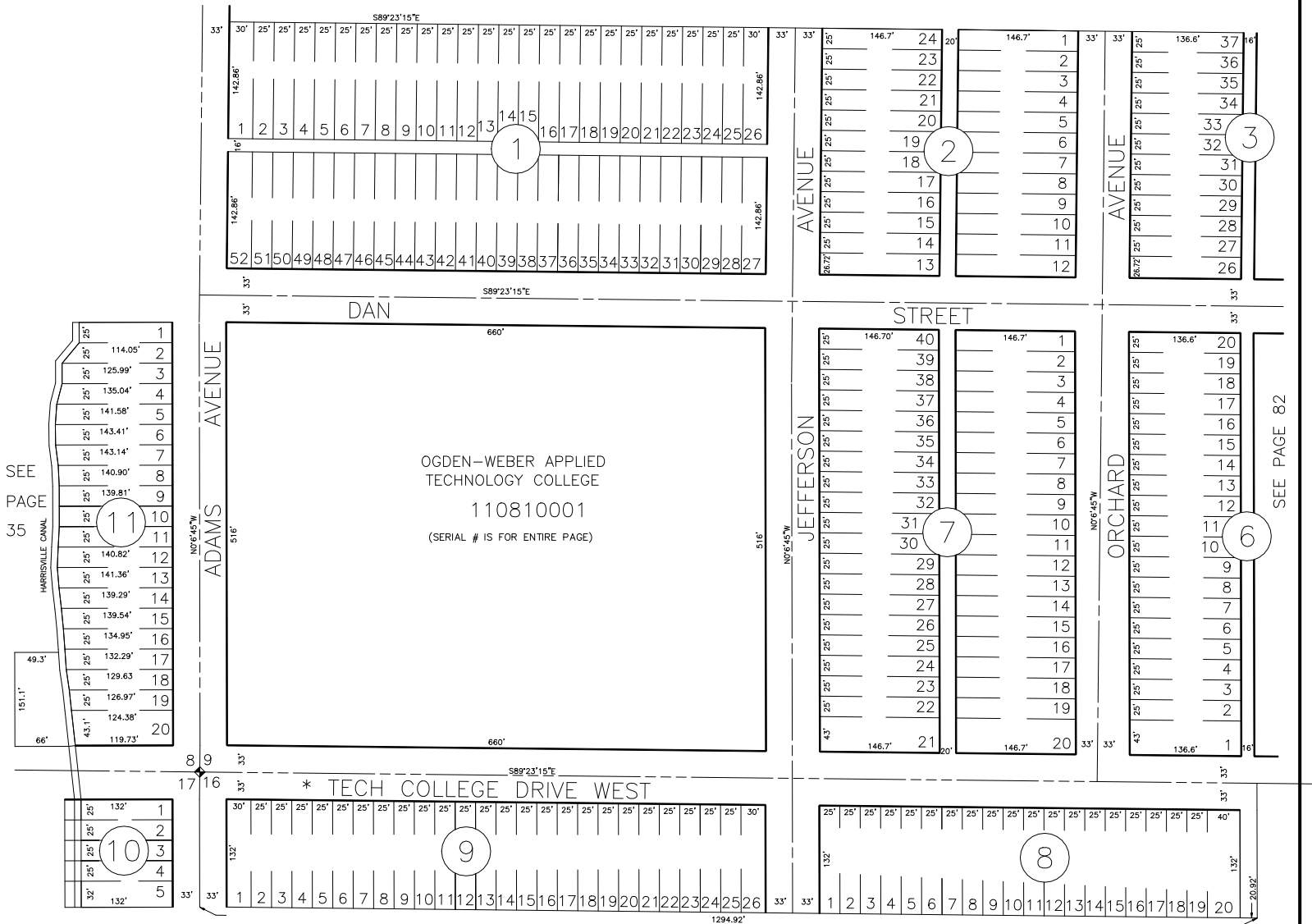


PART OF SECTIONS 8,9,16,17, T.6N.,R.1W., S.L.B.&M.  
**ACADEMY HEIGHTS ADDITION**  
BLOCKS 1,2,7,8,9,10,11, AND PART OF BLOCK 3 & 6

TAXING UNIT: 25

IN OGDEN CITY  
SCALE 1" = 100'

SEE PAGE 80



\* SEE NAME CHANGE  
ORDINANCE #2572762

SEE BOOK 12 PAGE 21

\*FOR TAX PURPOSES ONLY\*