

PART OF THE N.W. 1/4 OF SECTION 15, T.6N., R.1W., S.L.B. & M.
SUNCREST PARK NO. 3

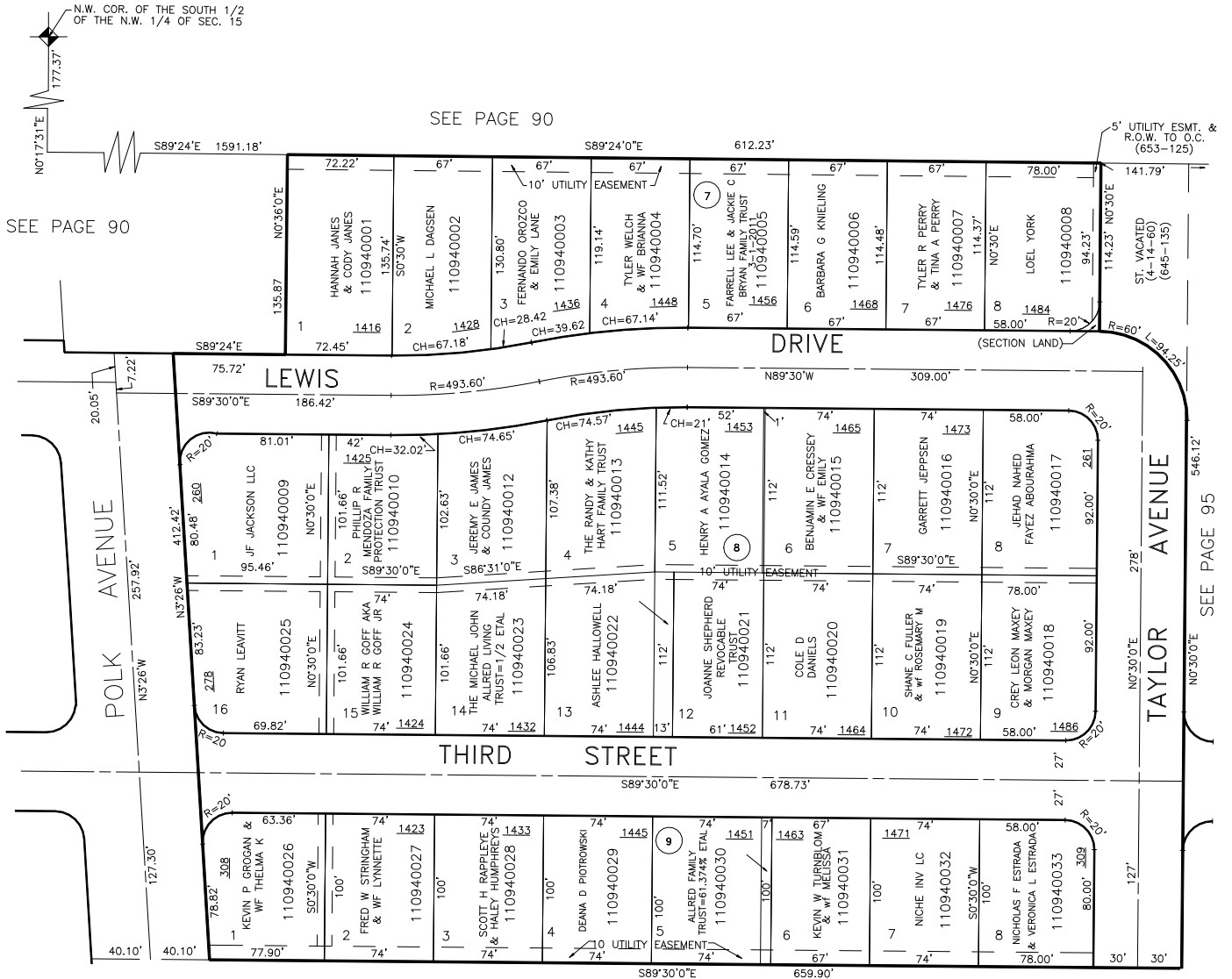
BLOCKS 7, 8, & 9

IN OGDEN CITY

SCALE 1" = 60'

TAXING UNIT: 25

94



SEE PAGE 93

FOR COMPLETE ENG DATA SEE
ORIGINAL DEDICATION PLAT IN
BOOK 12, PAGE 3 OF RECORDS.

FOR TAX PURPOSES ONLY

CRR 1-99