

PART OF THE N.W. 1/4 OF SECTION 15, T.6N., R.1W., S.L.B. & M.

SUNCREST PARK NO. 2

BLOCKS 4, 5, AND 6

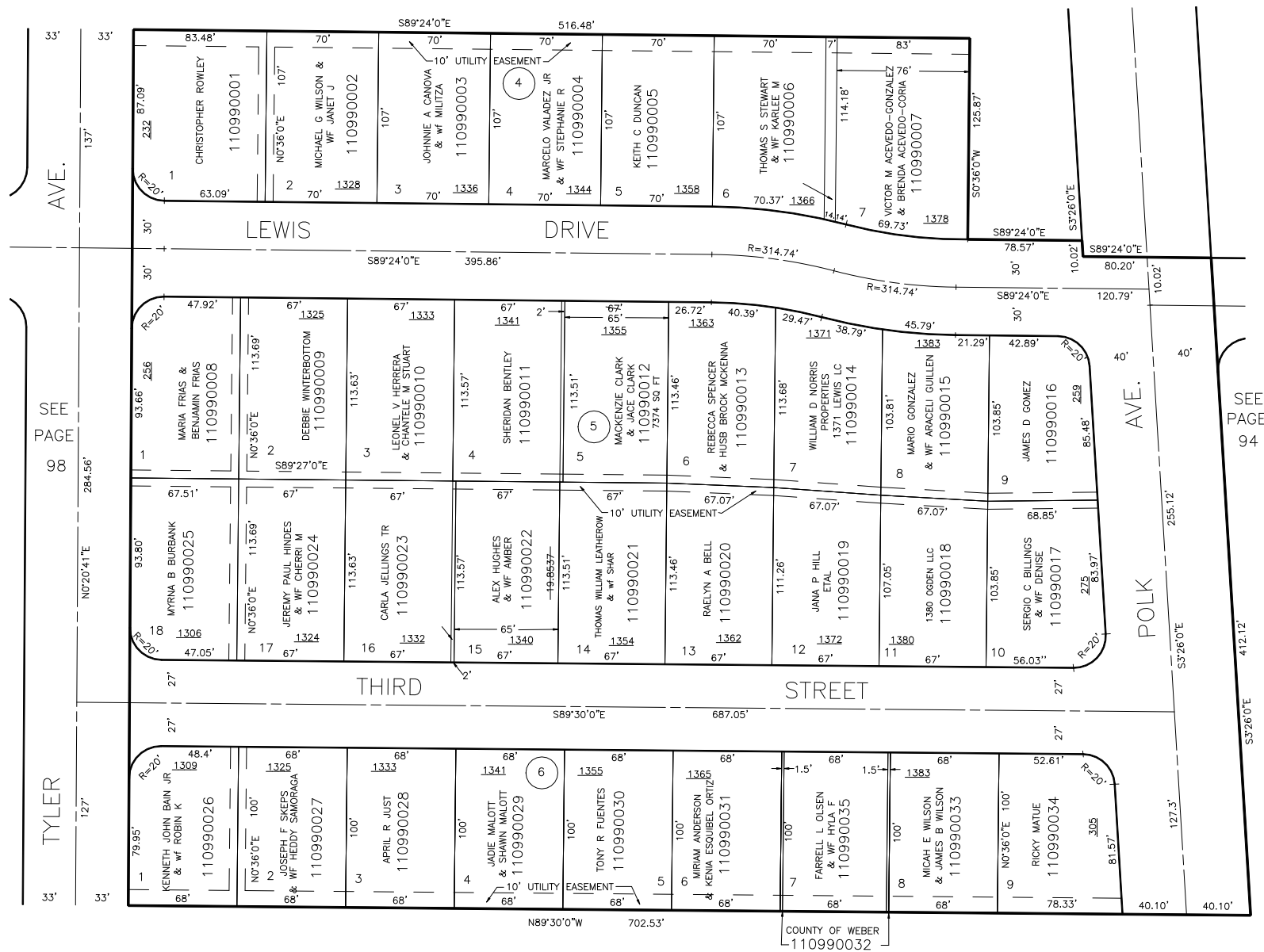
TAXING UNIT: 25

IN OGDEN CITY

SCALE 1" = 50'

SEE PAGE 97

CENTRAL WEBER SEWER IMPROVEMENT DISTRICT



SEE PAGE 92

FOR COMPLETE ENG DATA SEE
ORIGINAL DEDICATION PLAT IN
BOOK 11, PAGE 47 OF RECORDS.

FOR TAX PURPOSES ONLY