

PART OF WEST 1/2 OF SECTION 15, T.6N., R.1W., S.L.B. & M.

112

ROCKCLIFF ADDITION

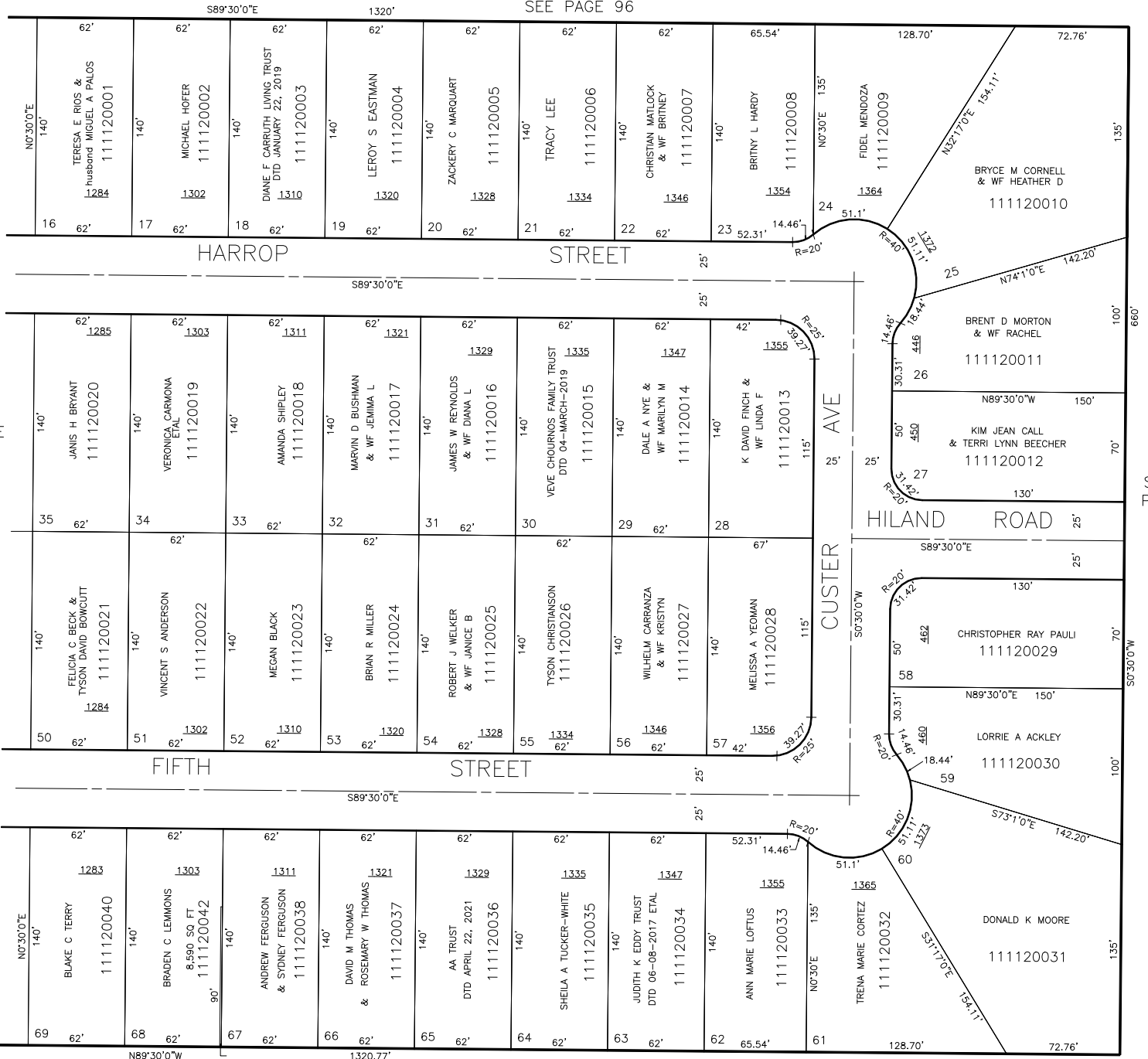
LOTS 16-35, 50-69

TAXING UNIT: 25

IN OGDEN CITY

SCALE 1" = 50'

SEE PAGE 96



SEE
PAGE
111

SEE
PAGE
114

SEE PAGE 113

FOR COMPLETE ENG DATA SEE
ORIGINAL DEDICATION PLAT IN
BOOK 9, PAGE 72 OF RECORDS.