

PART OF THE N.W. 1/4 OF SECTION 4, T.6N., R.1W., & S.W. 1/4 OF SECTION 33, T.7N., R.1W., S.L.B. & M.

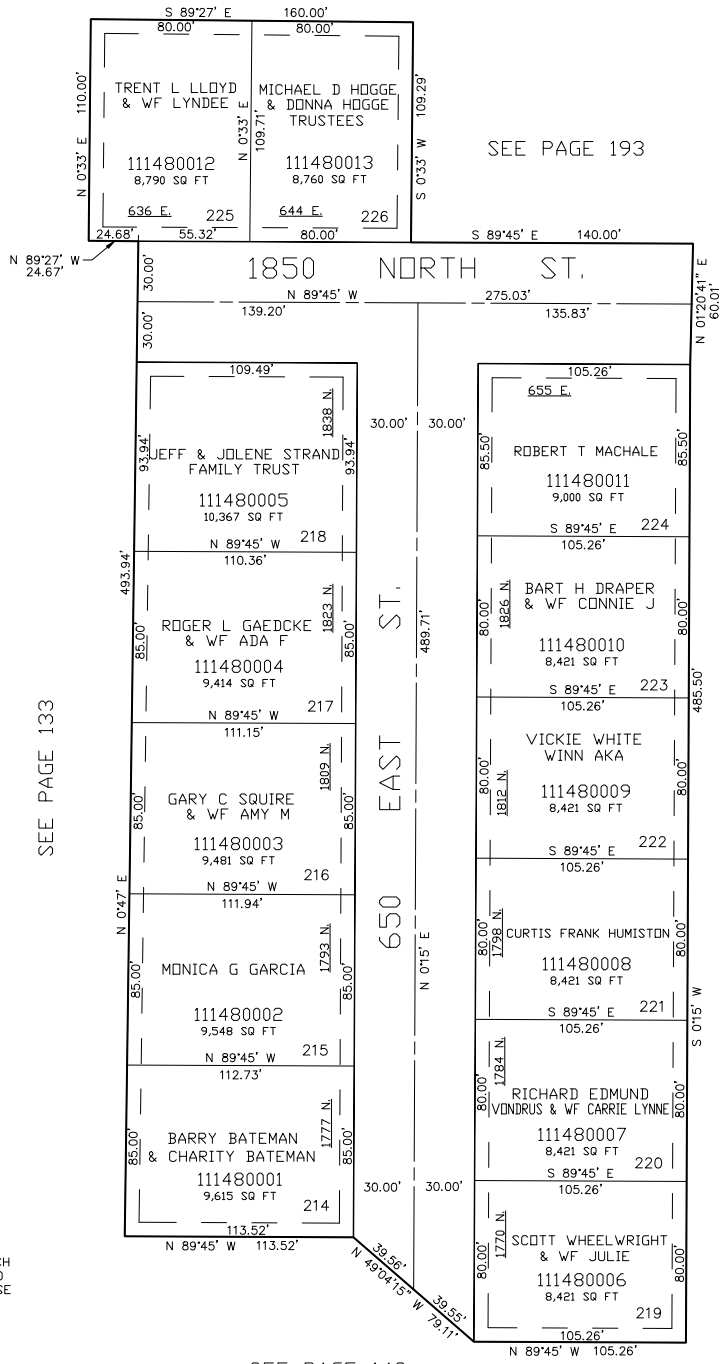
GREEN ACRES ESTATES NO. 8

IN NORTH OGDEN CITY

TAXING UNIT: 10

SCALE 1" = 50'

SEE PAGE 134



SEE PAGE 193

SEE PAGE 133

SEE PAGE 193

7' UTILITY & DRAINAGE EASEMENTS EACH SIDE OF PROPERTY LINES AS INDICATED BY DASHED LINES EXCEPT AS OTHERWISE SHOWN.

FOR COMPLETE ENG DATA SEE ORIGINAL DEDICATION PLAT IN BOOK 20, PAGE 72 OF RECORDS.

SEE PAGE 142

FOR TAX PURPOSES ONLY