

PART OF N.E. 1/4, SEC. 5, T.6N., R.1W., S.L.B. & M.
WOODFIELD ESTATES

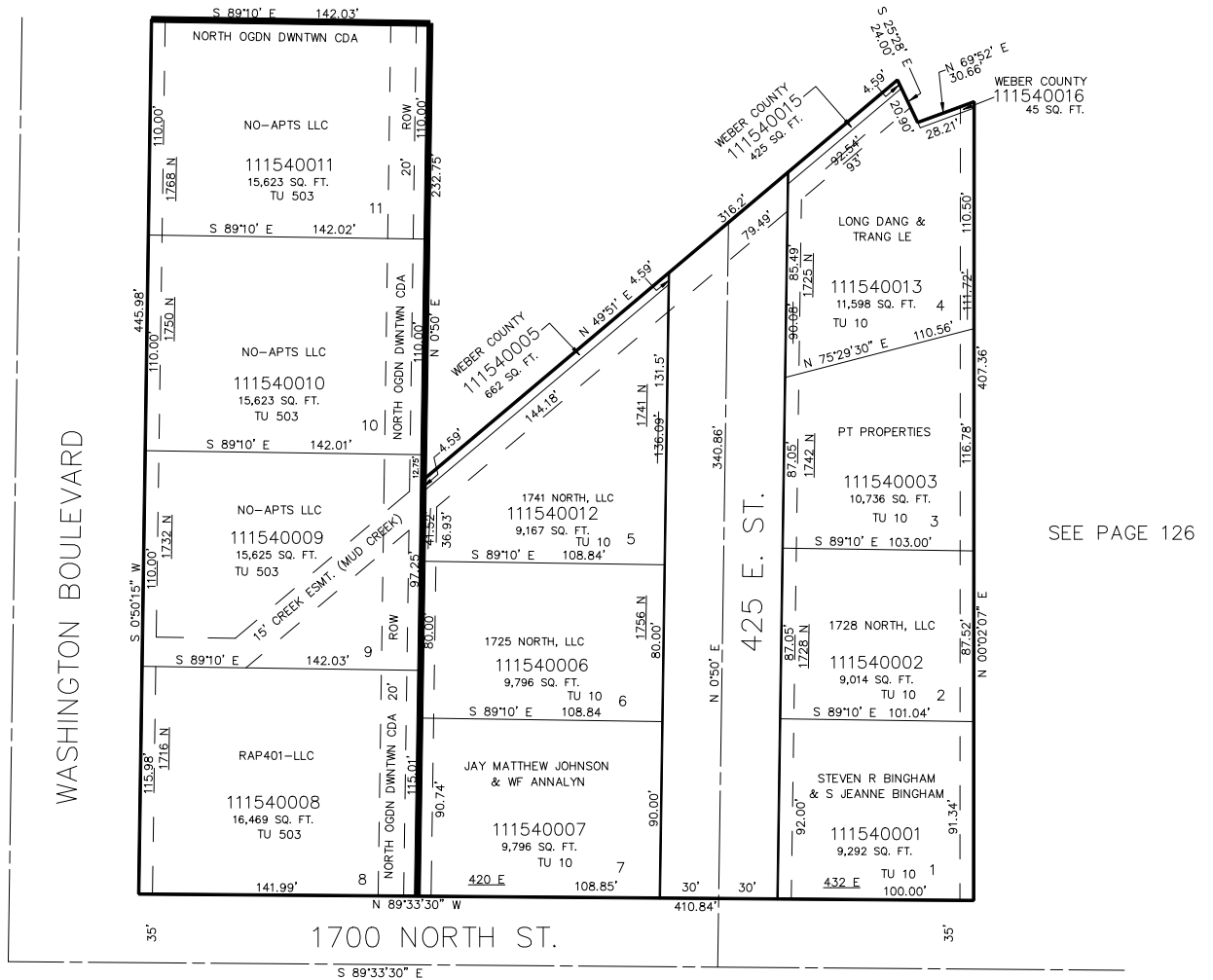
154

TAXING UNIT: 10, 503

IN WEBER COUNTY
 SCALE 1" = 50'

SEE PAGE 14-2

SEE PAGE 14-2



FOR TAX PURPOSES ONLY

CRR 12-98