

PART OF THE N.W. 1/4, OF SECTION 4, T.6N., R.1W., & THE S.W. 1/4, OF SECTION 33, T.7N., R.1W., S.L.B. & M. 193

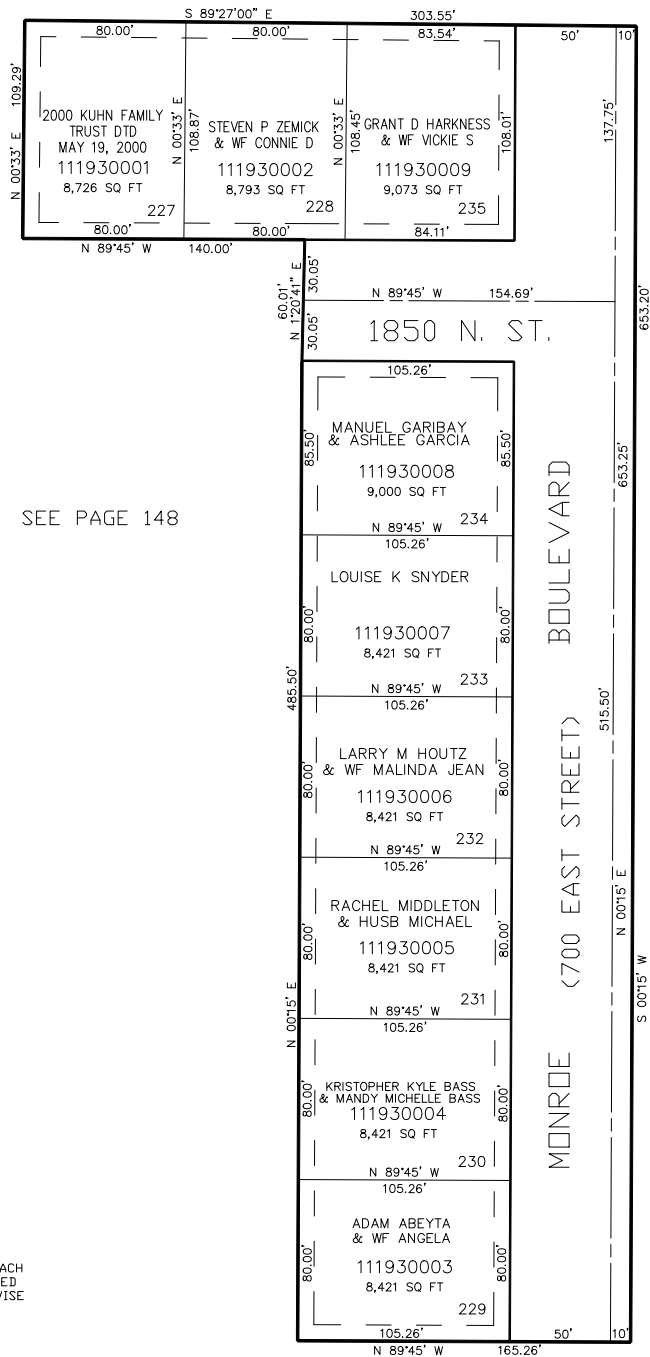
GREEN ACRES ESTATES NO. 9

IN NORTH OGDEN CITY

TAXING UNIT: 10

SCALE 1" = 50'

SEE BOOK 17, PAGE 76



SEE PAGE 148

SEE PAGE 4

7' UTILITY & DRAINAGE EASEMENTS EACH
SIDE OF PROPERTY LINES AS INDICATED
BY DASHED LINES EXCEPT AS OTHERWISE
SHOWN.

FOR COMPLETE ENG DATA SEE
ORIGINAL DEDICATION PLAT IN
BOOK 25, PAGE 49 OF RECORDS.

SEE PAGE 142

FOR TAX PURPOSES ONLY