

# GREENFIELD SUBDIVISION – PHASE 7

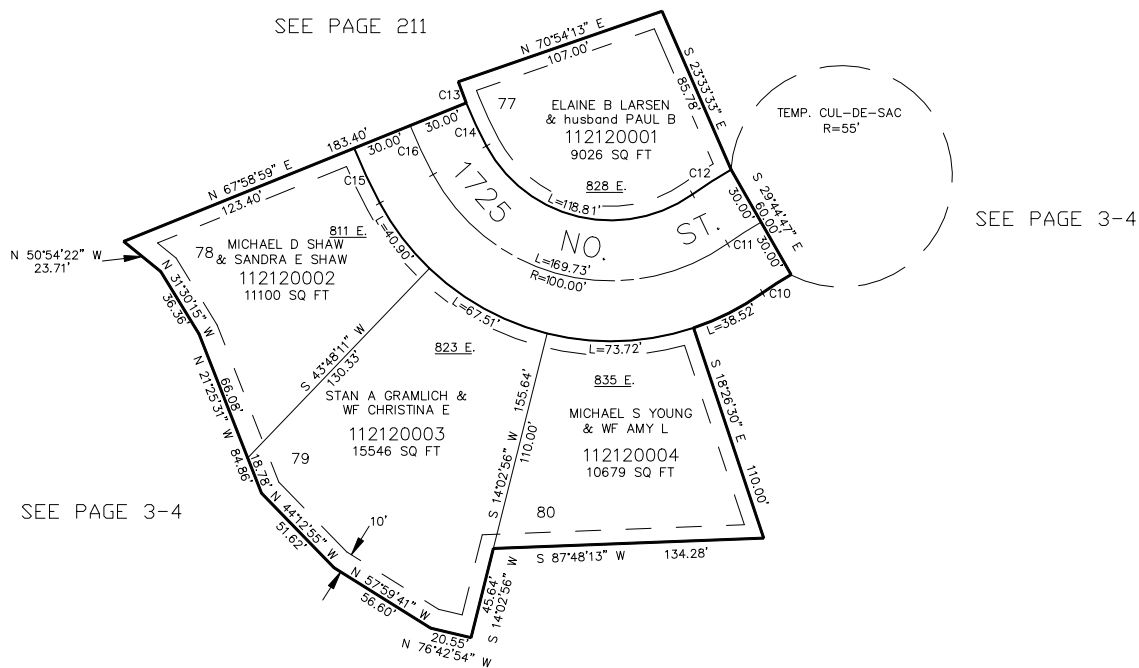
IN NORTH OGDEN CITY

TAXING UNIT: 10

SCALE 1" = 50'

CURVE DATA

CURVE	RADIUS	LENGTH
C10	170.00'	16.83'
C11	200.00'	19.79'
C12	230.00'	22.77'
C13	220.00'	11.21'
C14	220.00'	34.83'
C15	280.00'	30.06'
C16	250.00'	26.84'



7' UTILITY & DRAINAGE EASEMENTS EACH  
SIDE OF PROPERTY LINES AS INDICATED  
BY DASHED LINES EXCEPT AS OTHERWISE  
SHOWN.

FOR COMPLETE ENG DATA SEE  
ORIGINAL DEDICATION PLAT IN  
BOOK 37, PAGE 38 OF RECORDS.

SEE PAGE 3-4

\*FOR TAX PURPOSES ONLY\*

BM 2-94