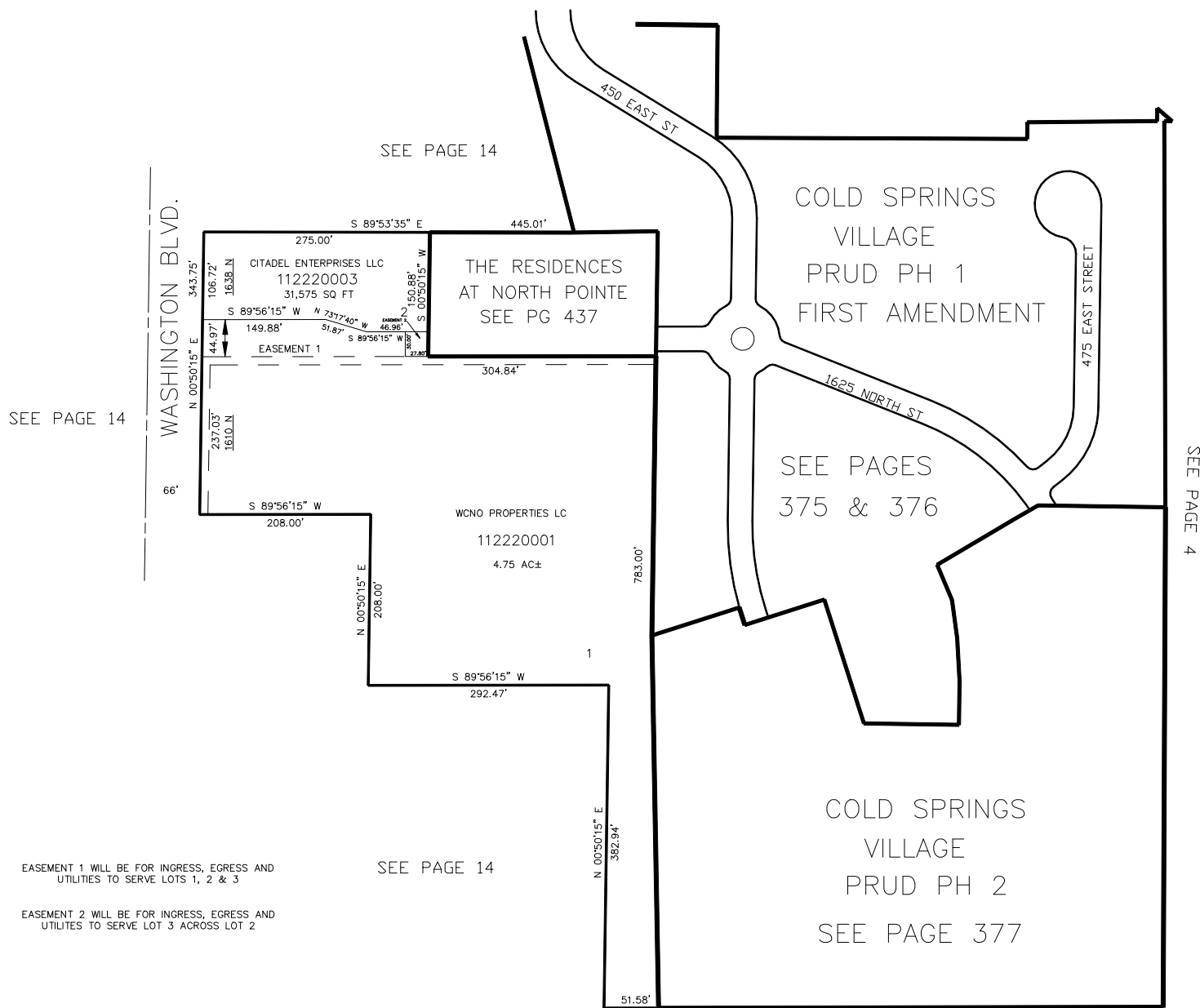


PART OF THE NW 1/4, SEC. 4, T.6N., R.1W, S.L.B. & M.
 PART OF THE NE 1/4, SEC. 5, T.6N., R.1W, S.L.B. & M.
NORTH POINTE THEATERS SUBDIVISION

TAXING UNIT: 10

IN NORTH OGDEN CITY

SCALE 1" = 100'



EASEMENT 1 WILL BE FOR INGRESS, EGRESS AND UTILITIES TO SERVE LOTS 1, 2 & 3

EASEMENT 2 WILL BE FOR INGRESS, EGRESS AND UTILITIES TO SERVE LOT 3 ACROSS LOT 2

10' UTILITY & DRAINAGE EASEMENTS EACH SIDE OF PROPERTY LINES AS INDICATED BY DASHED LINES EXCEPT AS OTHERWISE SHOWN.

FOR COMPLETE ENG DATA SEE ORIGINAL DEDICATION PLAT IN BOOK 40, PAGE 88 OF RECORDS.

FOR TAX PURPOSES ONLY

KST 11-95