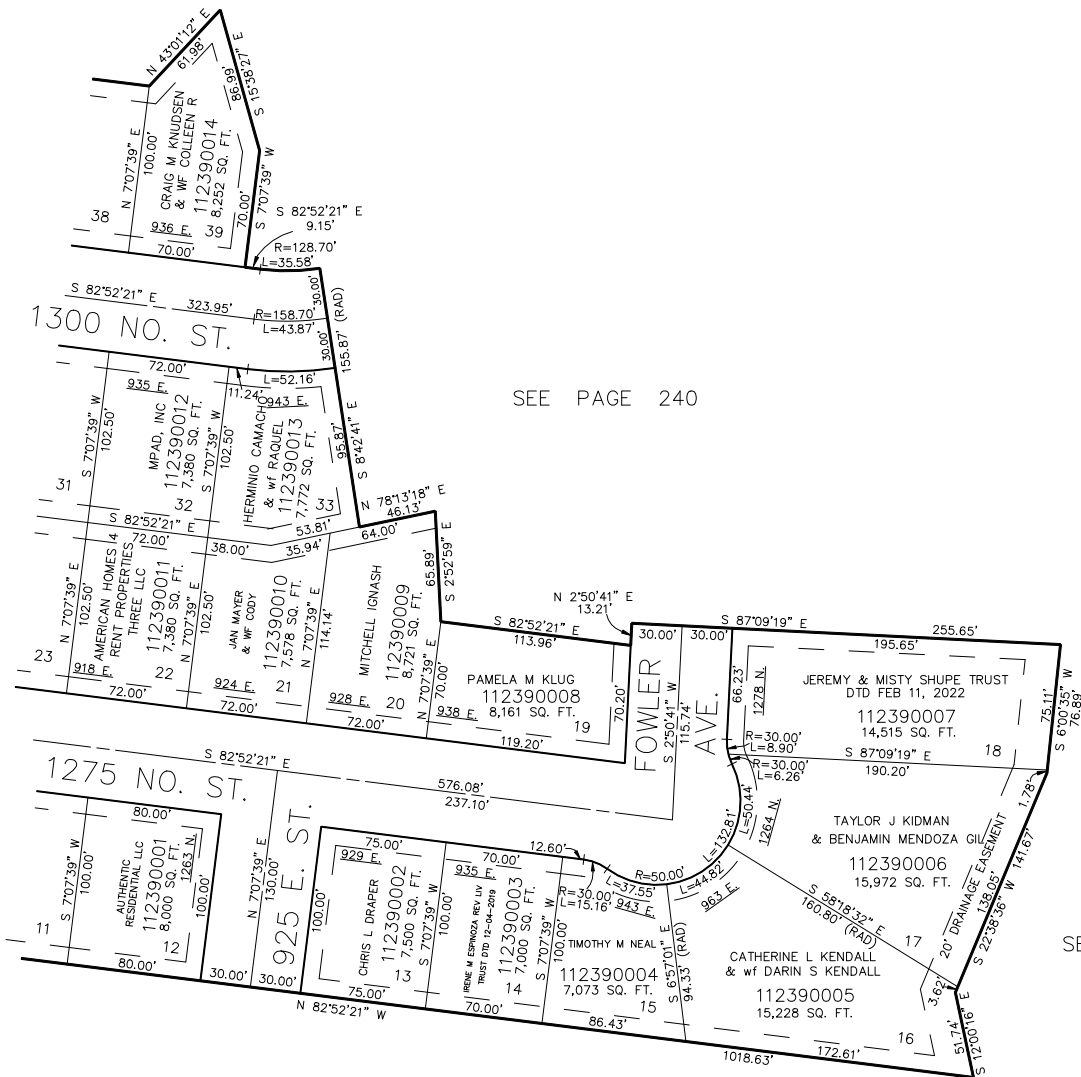


PART OF THE S.E. 1/4, OF SEC. 4, T.6N., R.1W., S.L.B. & M.
NORTH STAR SUBDIVISION NO.1

IN OGDEN CITY
 SCALE 1" = 60'

TAXING UNIT: 14



SEE PAGE 238

SEE PAGE 240

SEE PAGE 5

SEE PAGE 202

10' UTILITY & DRAINAGE EASEMENTS
 EACH SIDE OF PROPERTY LINES AS
 INDICATED BY DASHED LINES EXCEPT
 AS OTHERWISE SHOWN.

FOR COMPLETE ENG DATA SEE
 ORIGINAL DEDICATION PLAT IN
 BOOK 43, PAGE 73 OF RECORDS.

FOR TAX PURPOSES ONLY