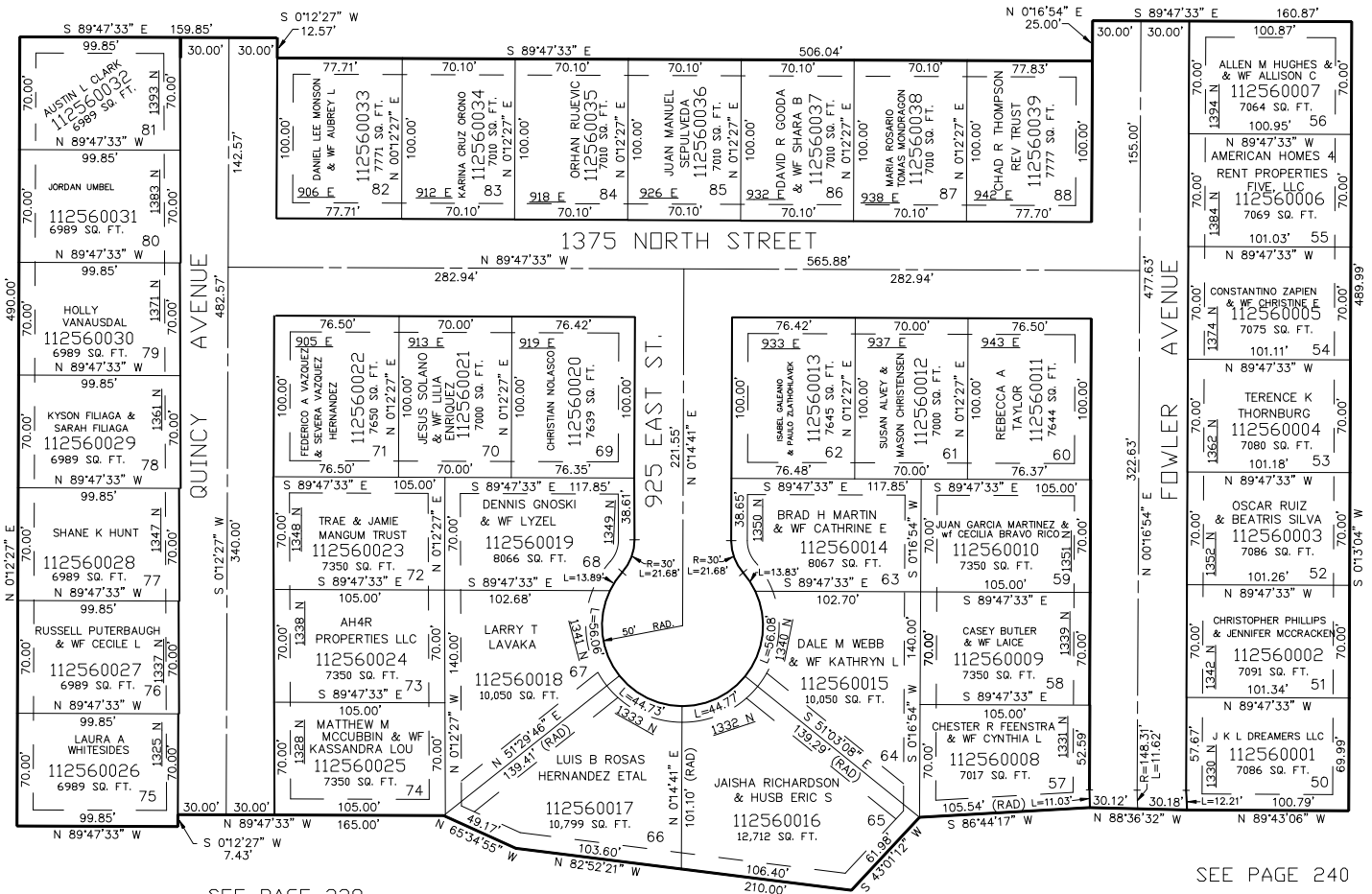


PART OF THE S.E 1/4, OF SEC. 4, T.6N., R.1W., S.L.B. & M.
NORTH STAR SUBDIVISION NO. 3

IN OGDEN CITY
 SCALE 1" = 60'

TAXING UNIT: 14

SEE PAGE 5



SEE PAGE 238

SEE PAGE 239

SEE PAGE 240

10' UTILITY & DRAINAGE EASEMENTS EACH
 SIDE OF PROPERTY LINES AS INDICATED
 BY DASHED LINES EXCEPT AS OTHERWISE
 SHOWN.

FOR COMPLETE ENG DATA SEE
 ORIGINAL DEDICATION PLAT IN
 BOOK 46, PAGE 84 OF RECORDS.

FOR TAX PURPOSES ONLY