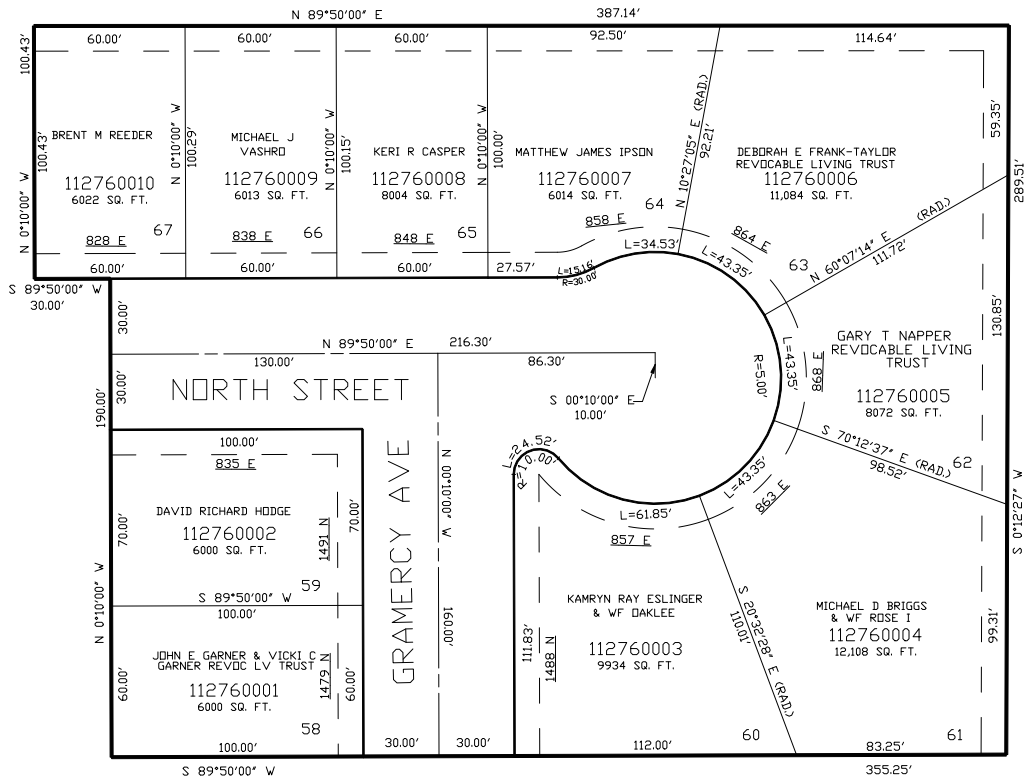


PART OF SECTION 4, T.6N., R.1W., S.L.B. & M.
LOMOND DALE SUBDIVISION NO. 5

IN OGDEN CITY
SCALE 1" = 40'

TAXING UNIT: 14

SEE PAGE 6



SEE PAGE 5

SEE PAGE 275

FOR COMPLETE ENG DATA SEE
ORIGINAL DEDICATION PLAT IN
BOOK 49, PAGE 39 OF RECORDS.

10' UTILITY & DRAINAGE EASEMENTS EACH
SIDE OF PROPERTY LINES AS INDICATED
BY DASHED LINES EXCEPT AS OTHERWISE
SHOWN.

FOR TAX PURPOSES ONLY