

PART OF THE SE. 1/4, OF SECTION 4, T.6N., R.1W., S.L.B. & M.
NORTH STAR SUBDIVISION NO 4

IN OGDEN CITY

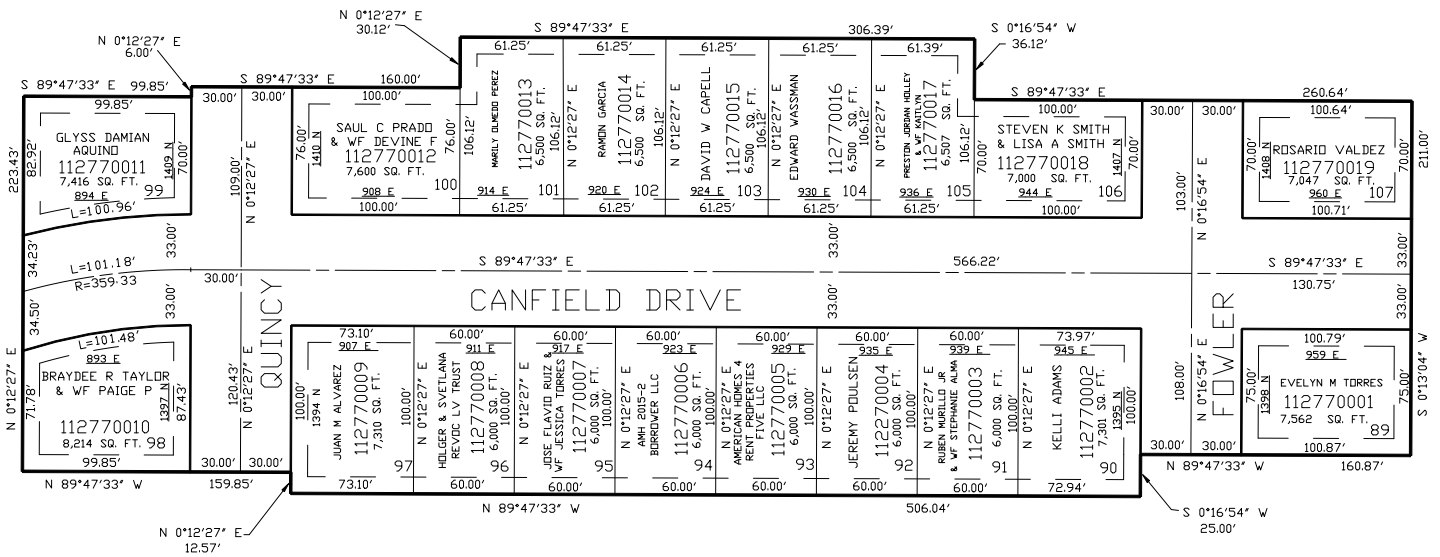
TAXING UNIT: 14

SCALE 1" = 60'

SEE PAGE 5

SEE PAGE 5

SEE PAGE 5



SEE PAGE 256

10' UTILITY & DRAINAGE EASEMENTS EACH
 SIDE OF PROPERTY LINES AS INDICATED
 BY DASHED LINES EXCEPT AS OTHERWISE
 SHOWN.

FOR COMPLETE ENG DATA SEE
 ORIGINAL DEDICATION PLAT IN
 BOOK 49, PAGE 45 OF RECORDS.

FOR TAX PURPOSES ONLY