

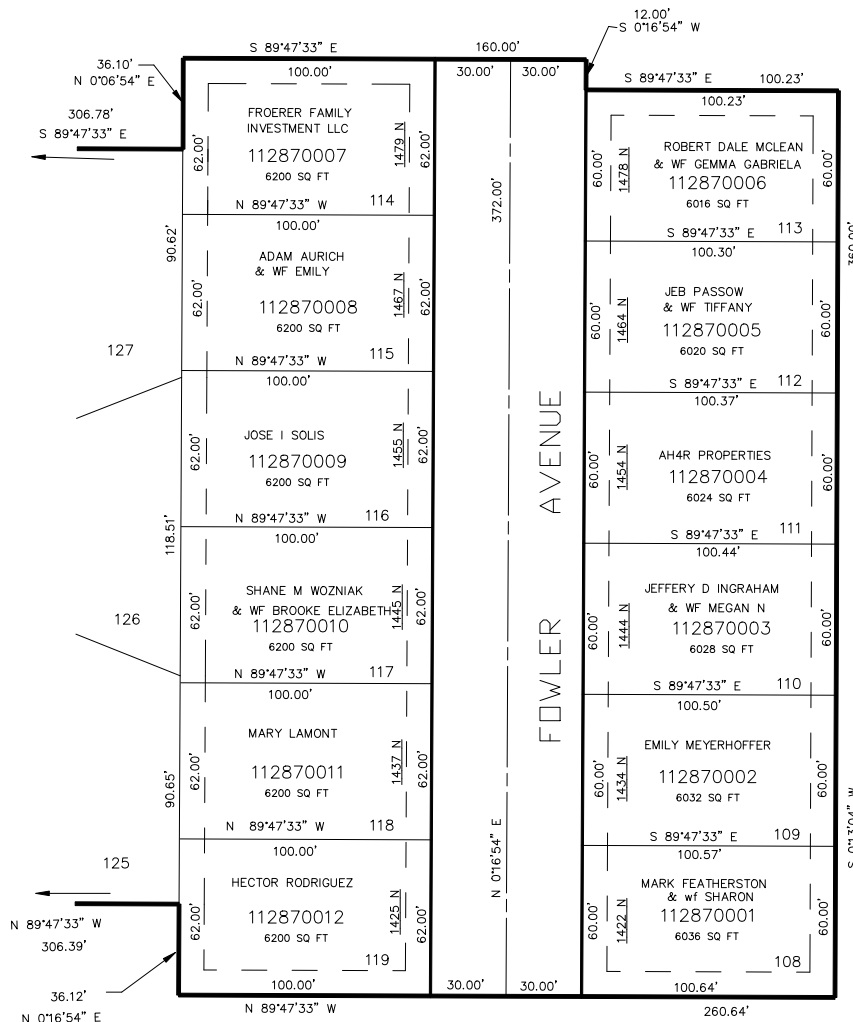
PART OF THE S.E.1/4, OF SECTION 4, T.6N., R.1W., S.L.B. & M.
NORTH STAR SUBDIVISION NO.5

287

IN OGDEN CITY
 SCALE 1" = 40'

TAXING UNIT: 14

SEE PAGE 5



SEE PAGE 288

SEE PAGE 5

SEE PAGE 277

FOR COMPLETE ENG DATA SEE
 ORIGINAL DEDICATION PLAT IN
 BOOK 50, PAGE 83 OF RECORDS.

10' UTILITY & DRAINAGE EASEMENTS EACH
 SIDE OF PROPERTY LINES AS INDICATED
 BY DASHED LINES EXCEPT AS OTHERWISE
 SHOWN.

FOR TAX PURPOSES ONLY

JAR 11-99