

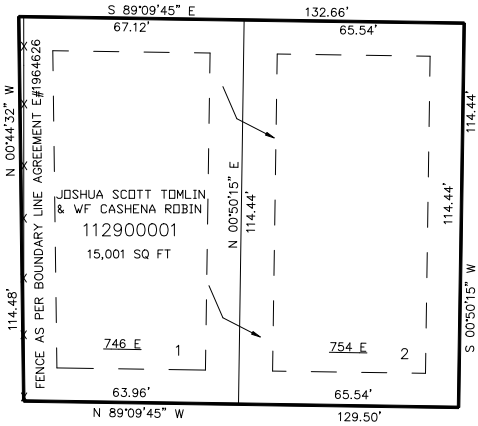
PART OF THE S.W.1/4, OF SECTION 9, T.6N., R.1W., S.L.B. & M.
NORTH RIDGE ESTATES SUBDIVISION PH.1

TAXING UNIT: 25

IN OGDEN CITY
SCALE 1" = 30'

SEE PAGE 191

SEE PAGE 80-1



SEE PAGE 80-1

NORTH STREET

SEE PAGE 80-1

FOR COMPLETE ENG DATA SEE
ORIGINAL DEDICATION PLAT IN
BOOK 50, PAGE 95 OF RECORDS.

10' UTILITY & DRAINAGE EASEMENTS EACH
SIDE OF PROPERTY LINES AS INDICATED
BY DASHED LINES EXCEPT AS OTHERWISE
SHOWN.

FOR TAX PURPOSES ONLY