

PART OF THE N.E. 1/4, OF SECTION 7, T.6N., R.1W., S.L.B. &amp; M.

## BUSINESS DEPOT OGDEN – PLAT 4

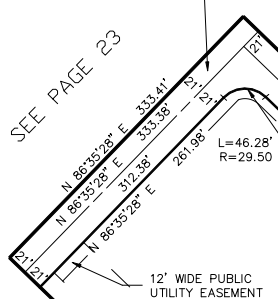
TAXING UNIT: 25

IN OGDEN CITY

SCALE 1" = 100'

600 NORTH STREET  
(A 42' WIDE STREET (RIGHT-OF-WAY))

SEE PAGE 23

12' WIDE PUBLIC  
UTILITY EASEMENT20' WIDE PUBLIC  
UTILITY EASEMENT

SEE PAGE 23

S 03°31'22" E 1636.22'  
S 03°31'22" E 1580.86'  
S 03°31'22" E 1594.26' 1615.26'  
1493.36'  
491 NORTH DEPOT DRIVE  
HOT SPRINGS L.C.  
113090001  
10.39 AC±

DEPOT DRIVE

SEE PAGE 23

42' WIDE COMMON  
ACCESS EASEMENT

FOR COMPLETE ENG DATA SEE  
ORIGINAL DEDICATION PLAT IN  
BOOK 53, PAGE 21 OF RECORDS.

10' UTILITY & DRAINAGE EASEMENTS EACH  
SIDE OF PROPERTY LINES AS INDICATED  
BY DASHED LINES EXCEPT AS OTHERWISE  
SHOWN.

N 03°30'02" W  
55.36'400 NORTH STREET  
(A 42' WIDE STREET (RIGHT-OF-WAY))

SEE PAGE 23

\*FOR TAX PURPOSES ONLY\*

JC 12-00