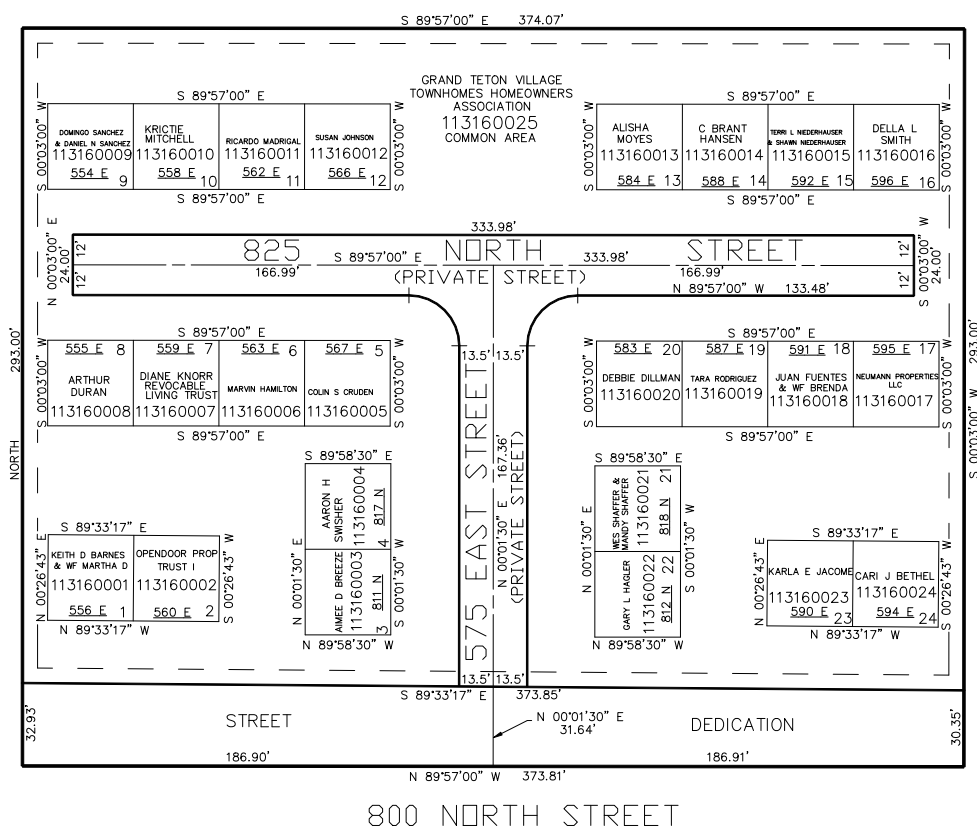


IN OGDEN CITY
SCALE 1" = 60'

TAXING UNIT: 25

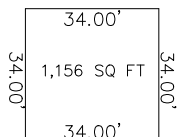
SEE PAGE 45



SEE PAGE 45

SEE PAGE 45

SEE PAGE 45



FOR COMPLETE ENG DATA SEE
ORIGINAL DEDICATION PLAT IN
BOOK 53, PAGE 96 OF RECORDS.

6' UTILITY & DRAINAGE EASEMENTS EACH
SIDE OF PROPERTY LINES AS INDICATED
BY DASHED LINES EXCEPT AS OTHERWISE
SHOWN.

TYPICAL BUILDING UNIT DIMENSION
(NOT TO SCALE)

FOR TAX PURPOSES ONLY

JC 6-01