

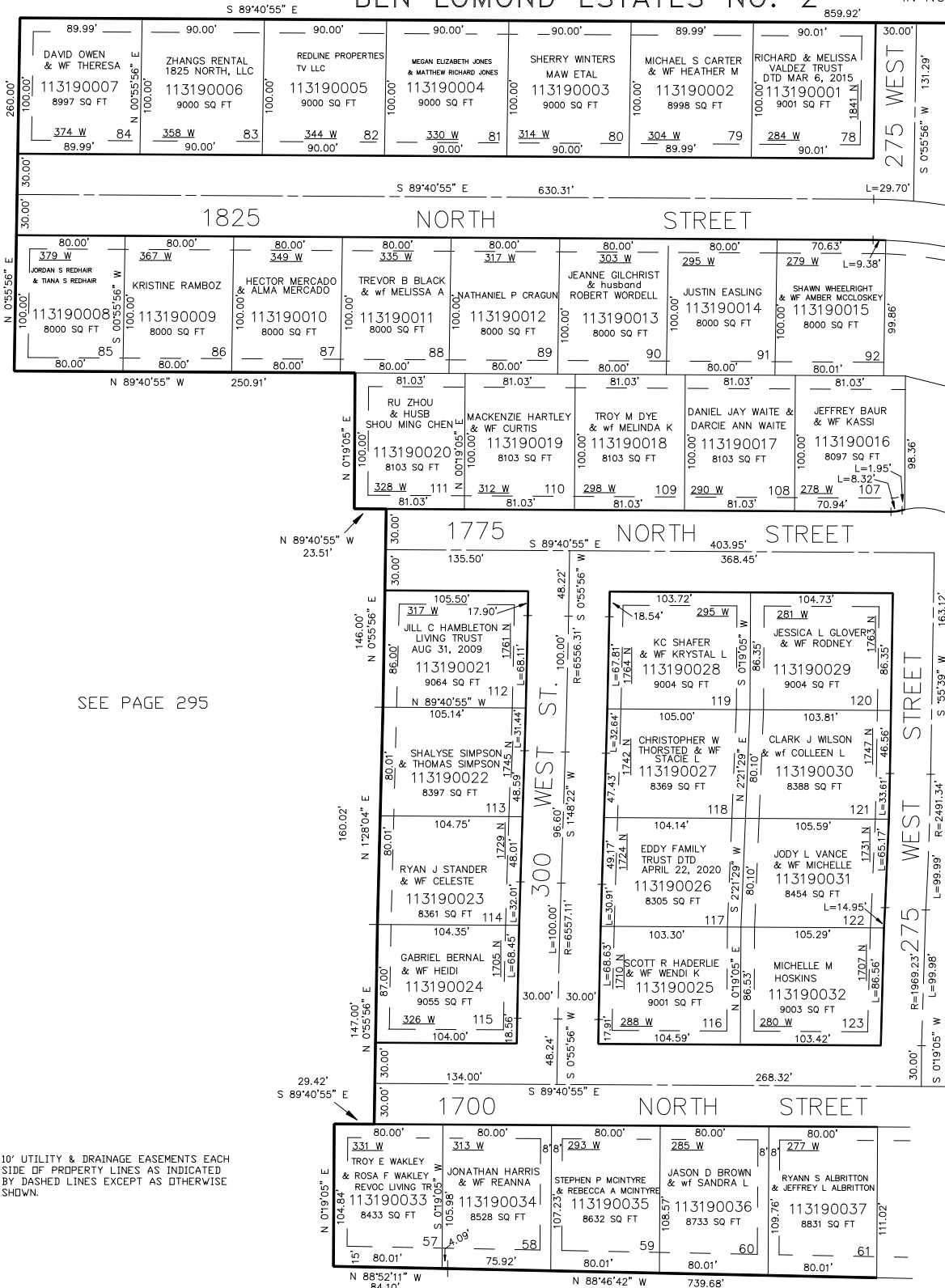
PART OF THE NW 1/4, OF SECTION 5, T.6N., R.1W., S.L.B. & M.

319

SEE PAGE 295

BEN LOMOND ESTATES NO. 2

IN NORTH OGDEN CITY



SCALE 1" = 60'
TAXING UNIT: 66

SEE PAGE 295

SEE PAGE 320

10' UTILITY & DRAINAGE EASEMENTS EACH SIDE OF PROPERTY LINES AS INDICATED BY DASHED LINES EXCEPT AS OTHERWISE SHOWN.

FOR COMPLETE ENG DATA SEE ORIGINAL DEDICATION PLAT IN BOOK 54 PAGE 53 OF RECORDS.