

TAXING UNIT: 66

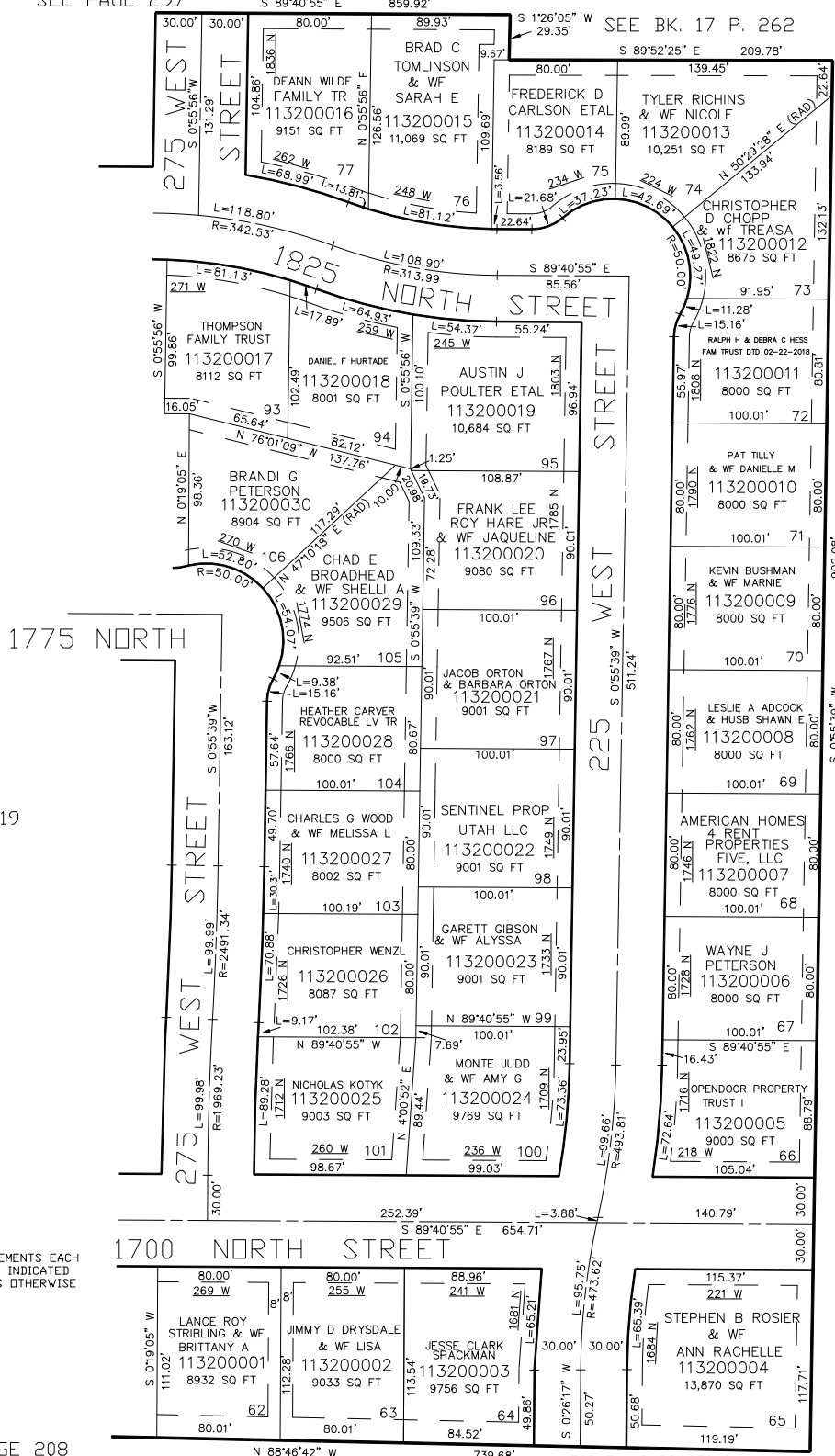
PART OF THE NW 1/4, OF SECTION 5, T.6N., R.1W., S.L.B. & M.

320

BEN LOMOND ESTATES NO. 2 IN NORTH OGDEN CITY

SEE PAGE 297

SCALE 1" = 60'



SEE PAGE 15

SEE PAGE 319

10' UTILITY & DRAINAGE EASEMENTS EACH SIDE OF PROPERTY LINES AS INDICATED BY DASHED LINES EXCEPT AS OTHERWISE SHOWN.

FOR COMPLETE ENG DATA SEE ORIGINAL DEDICATION PLAT IN BOOK 54 PAGE 53 OF RECORDS.

SEE PAGE 208

FOR TAX PURPOSES ONLY

KST 10-01