

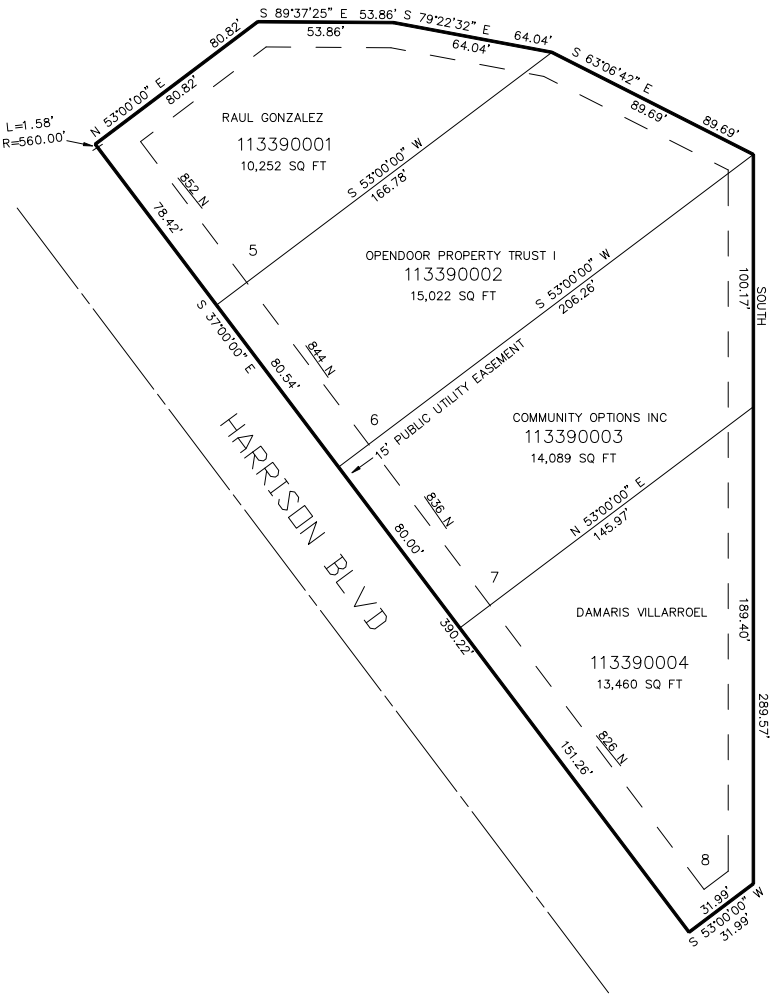
PART OF THE NE.1/4, OF SECTION 9, T.6N., R.1W., S.L.B. & M.
AMENDED WEST VIEW TERRACE PH-2

IN OGDEN CITY

TAXING UNIT: 25

SCALE 1" = 40'

SEE PAGE 312



SEE PAGE 183

SEE PAGE 181

SEE PAGE 183

FOR COMPLETE ENG DATA SEE
ORIGINAL DEDICATION PLAT IN
BOOK 58, PAGE 22 OF RECORDS.

10' UTILITY & DRAINAGE EASEMENTS EACH
SIDE OF PROPERTY LINES AS INDICATED
BY DASHED LINES EXCEPT AS OTHERWISE
SHOWN.

FOR TAX PURPOSES ONLY

BK 09-03