

PART OF THE SW 1/4 OF SECTION 9, T.6N., R.1W., S.L.B. & M.

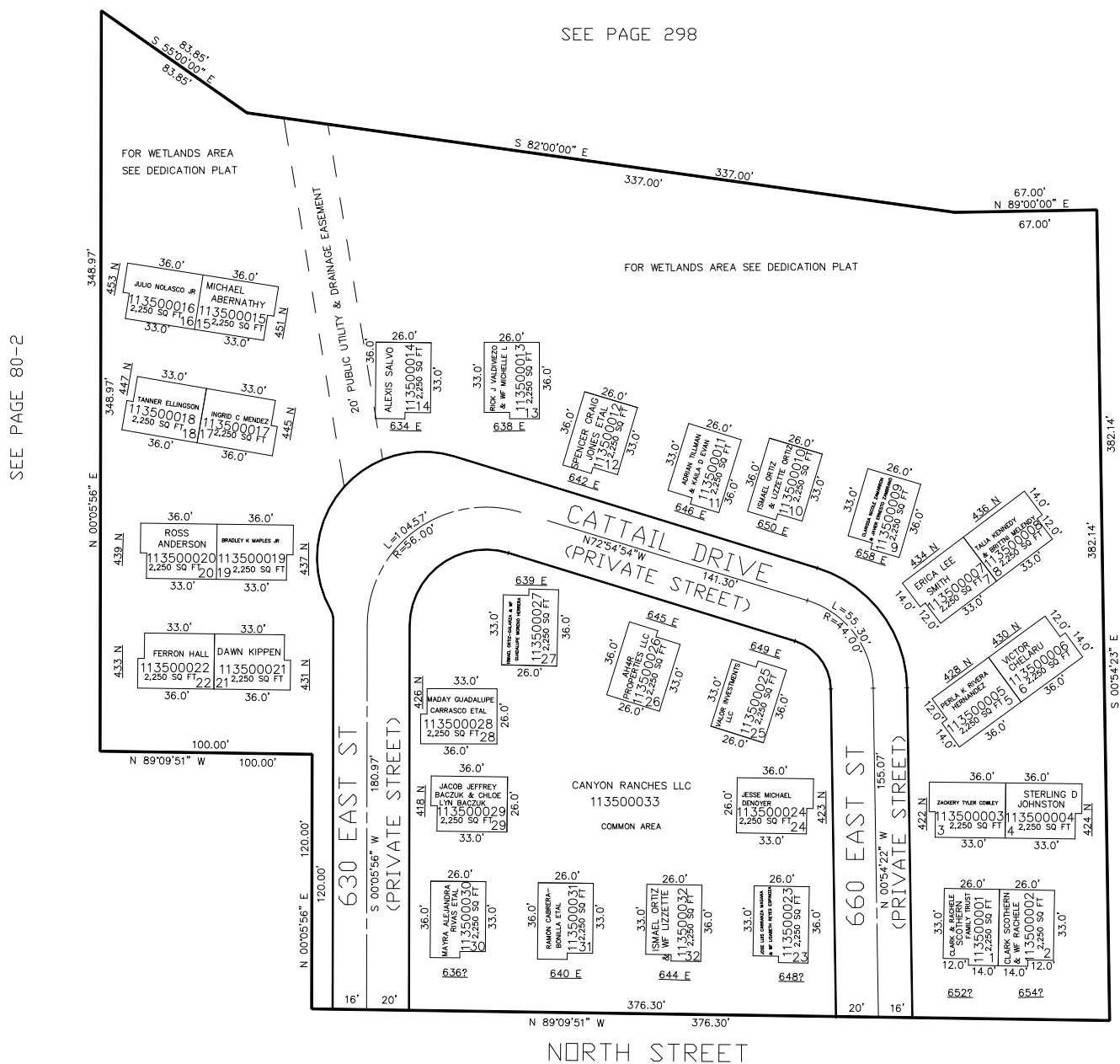
NORTH PARK MEADOWS A PRUD

IN OGDEN CITY

SCALE 1" = 40'

TAXING UNIT: 25

SEE PAGE 298



SEE PAGE 80-1

SEE PAGE 80-2

FOR COMPLETE ENG DATA SEE
ORIGINAL DEDICATION PLAT IN
BOOK 59, PAGE 56 OF RECORDS.

FOR TAX PURPOSES ONLY

LK 07-04