

PART OF THE SW.1/4, OF SECTION 7, T.6N., R.1W., S.L.B. & M.

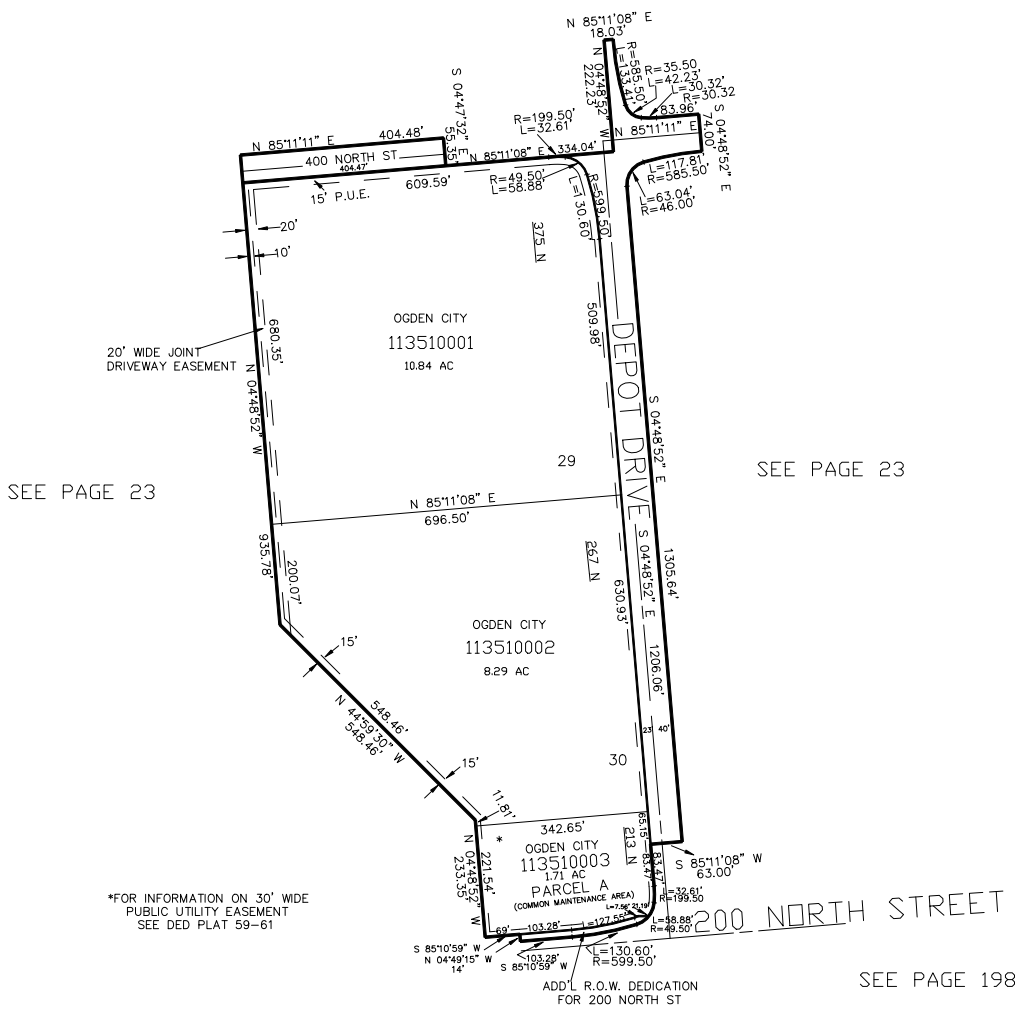
BUSINESS DEPOT OGDEN - PLAT 12

IN OGDEN CITY

SCALE 1" = 200'

TAXING UNIT: 25

SEE PAGE 309



FOR COMPLETE ENG DATA SEE
ORIGINAL DEDICATION PLAT IN
BOOK 59, PAGE 61 OF RECORDS.

10' UTILITY & DRAINAGE EASEMENTS EACH
SIDE OF PROPERTY LINES AS INDICATED
BY DASHED LINES EXCEPT AS OTHERWISE
SHOWN.

FOR TAX PURPOSES ONLY

JS 07-2004