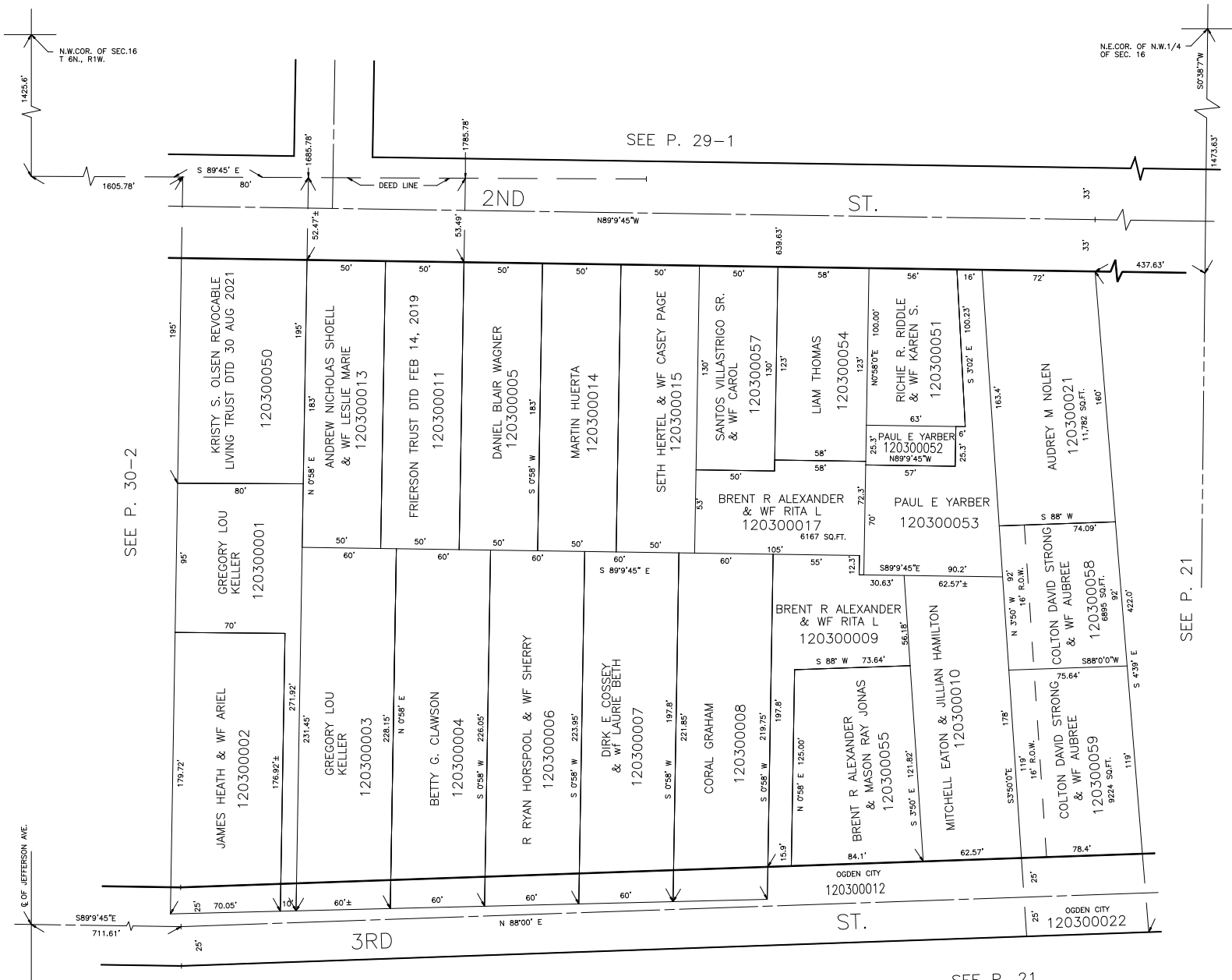


PART OF THE N.W. 1/4 OF
SECTION 16, T.6N.,R.1W., S.L.B.&M.

IN OGDEN CITY
SCALE 1" = 50'

TAXING UNIT: 25

ALSO SEE P. 30-2



SEE P. 30-2

SEE P. 21

SEE P. 30

SEE P. 21

FOR TAX PURPOSES ONLY