

PART OF THE N.E. 1/4, OF SEC. 17, T.6N., R.1W., S.L.B. & M.

# ORCHARD GROVE ANNEX ORCHARD GROVE ADDITION

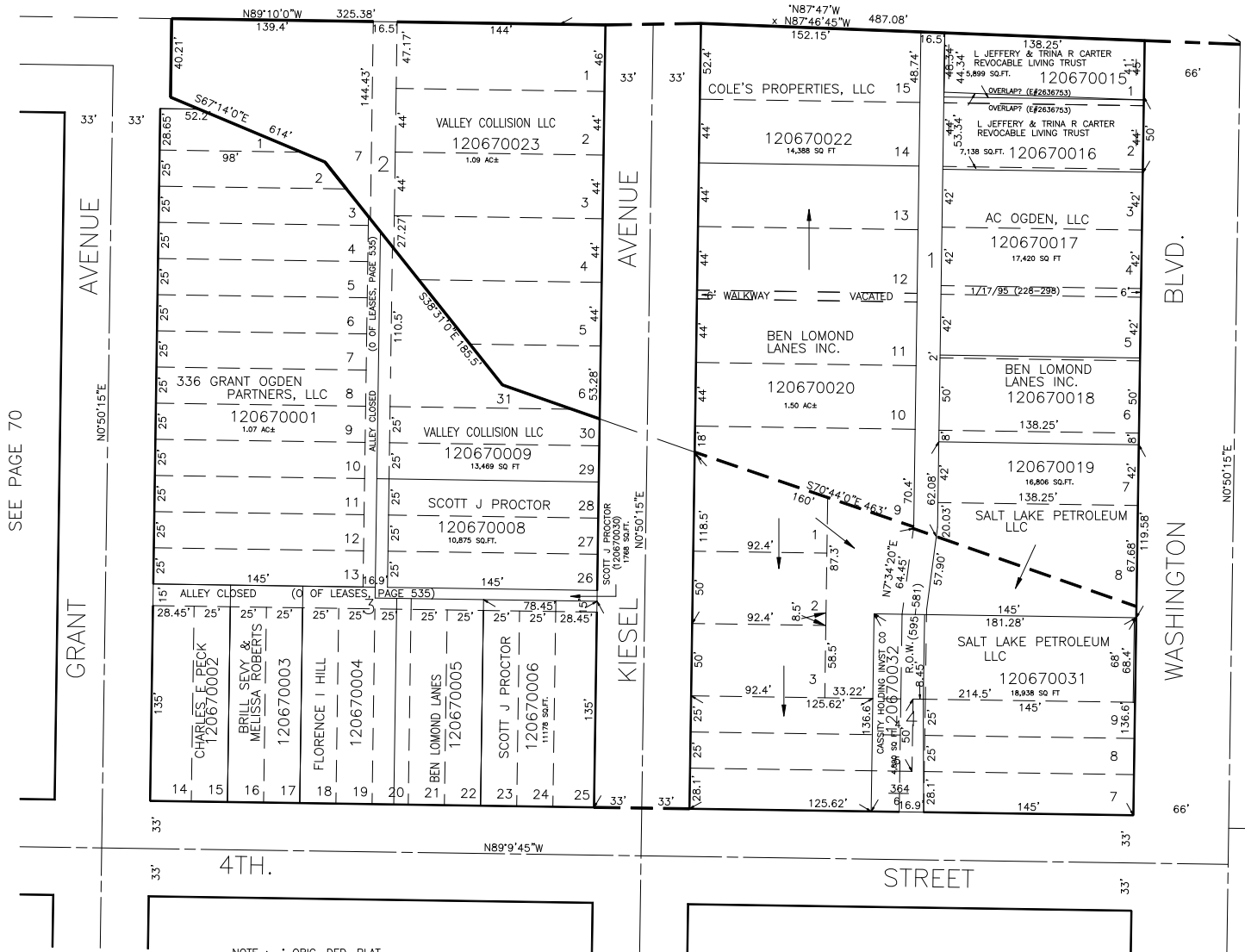
TAXING UNIT: 25

IN OGDEN CITY

SCALE 1" = 60'

PREFIX: 12-067

SEE PAGE 64



SEE PAGE 68

\*FOR TAX PURPOSES ONLY\*