

72

PART OF NORTH 1/2 OF SEC. 17, T.6N.,R.1W., S.L.B.&M.  
WALNUT HILL ADDITION

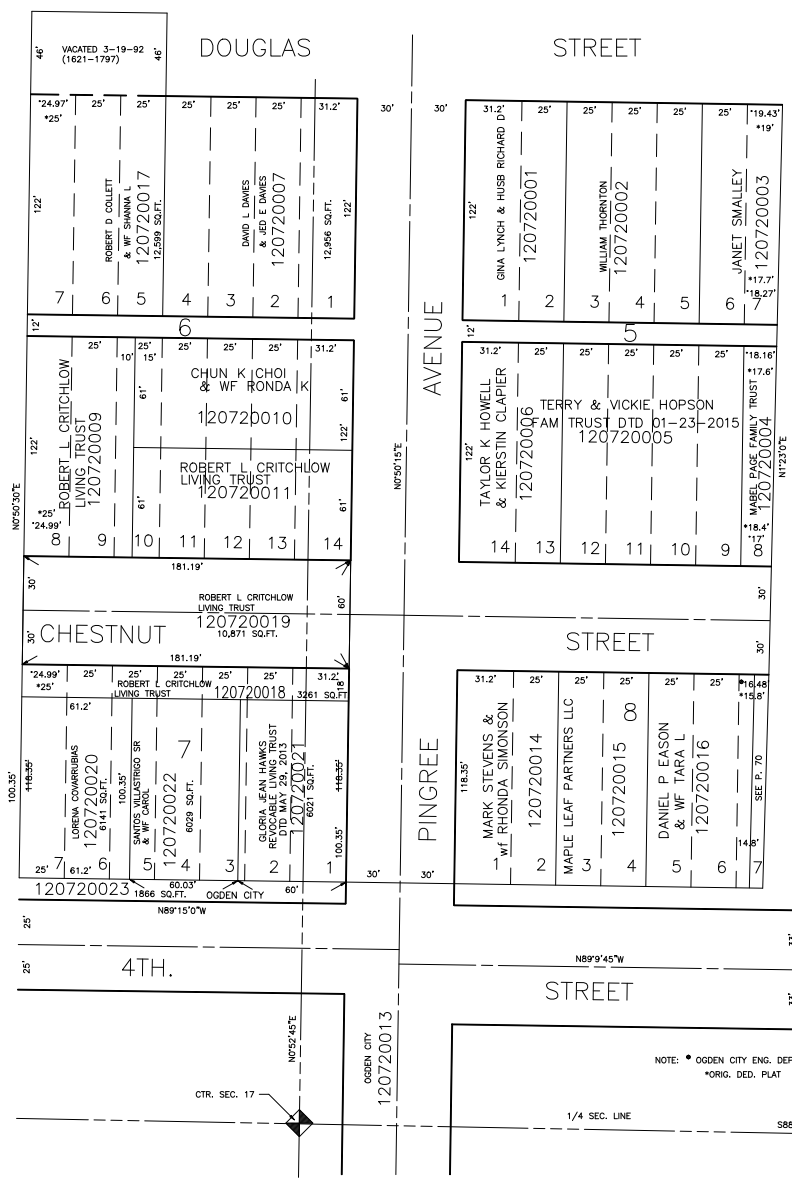
IN OGDEN CITY  
SCALE 1" = 50'

TAXING UNIT: 25

SEE PAGE 71

SEE PAGE 75

SEE PAGE 70



SEE PAGE 84

NOTE: • OGDEN CITY ENG. DEPT. PLATS  
\*ORIG. DED. PLAT

\*FOR TAX PURPOSES ONLY\*

WFJ 2-71