

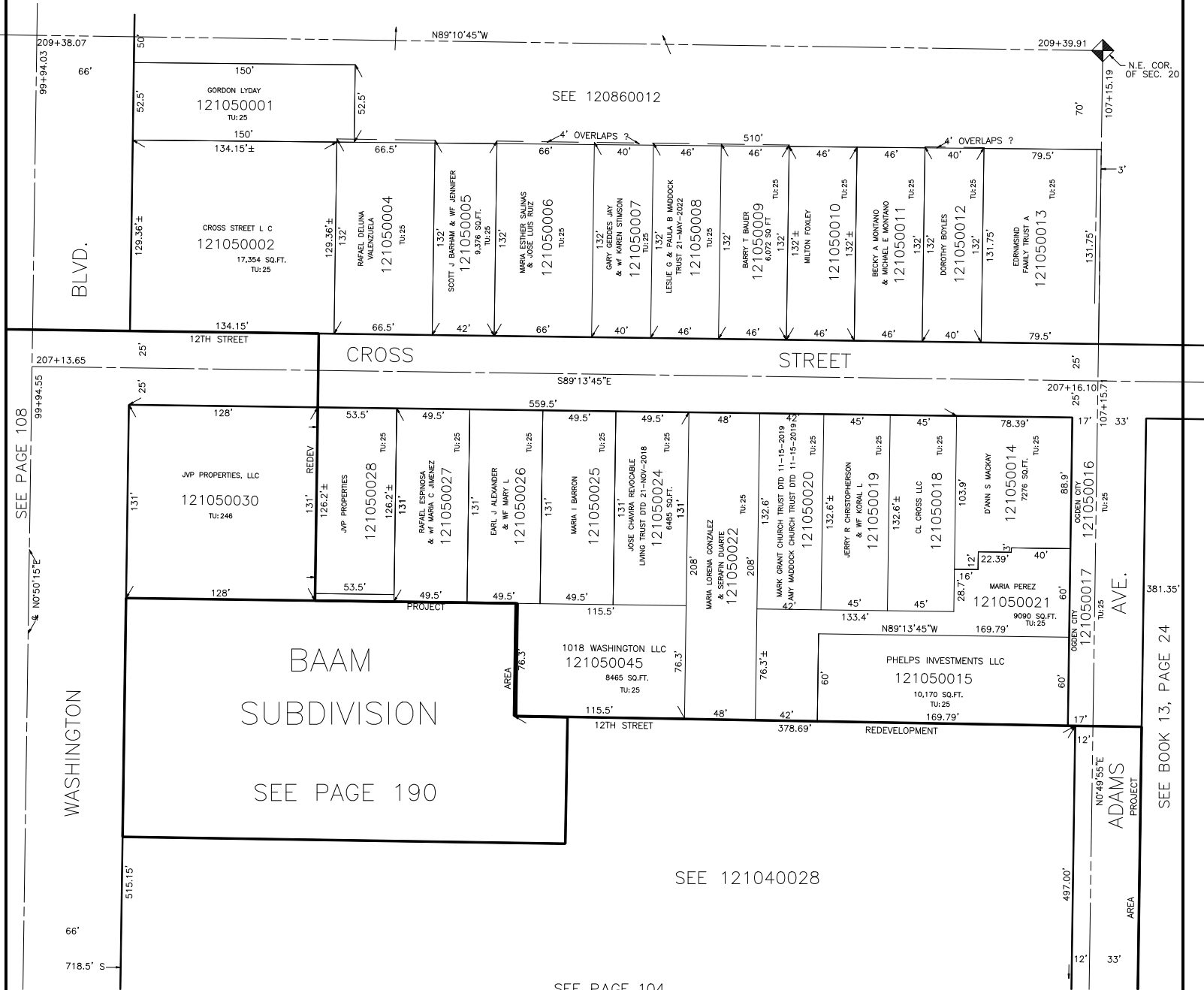
PART OF N.E. 1/4 OF N.E. 1/4  
SECTION 20, T.6N., R.1W., S.L.B. & M.

105

TAXING UNIT: 25,246

IN OGDEN CITY  
SCALE 1" = 50'

SEE PAGE 66



\*FOR TAX PURPOSES ONLY\*

XXX XX -97