

PART OF THE NE.1/4, OF SEC. 20 T.6N., R.1W., S.L.B. & M.

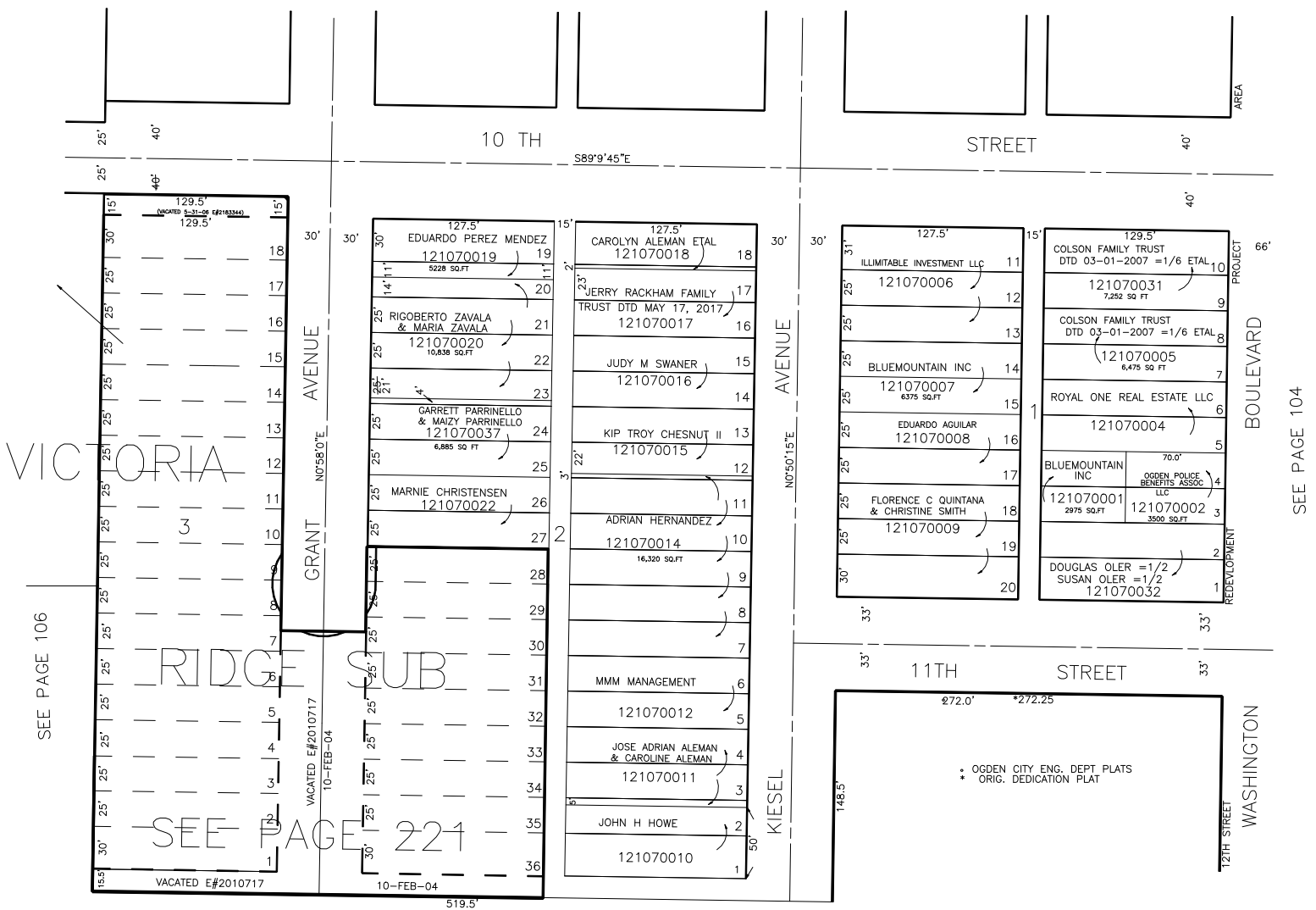
TERRACE SUBDIVISION

IN OGDEN CITY

SCALE 1" = 60'

TAXING UNIT: 25

SEE PAGE 108



SEE PAGE 108

FOR TAX PURPOSES ONLY

W.F.J. 03-1973