

PART OF THE NE.1/4, OF SECTION 20, T.6N., R.1W., S.L.B. & M.
BAAM SUBDIVISION

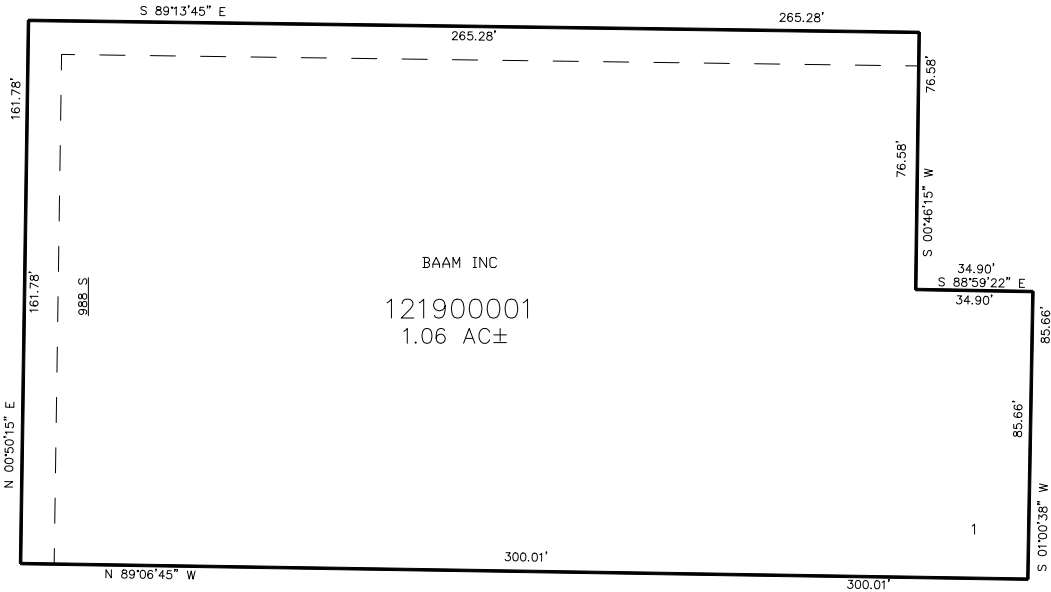
TAXING UNIT: 246

IN OGDEN CITY
SCALE 1" = 30'

SEE PAGE 105

WASHINGTON BOULEVARD

SEE PAGE 104



SEE PAGE 104

SEE PAGE 104

FOR COMPLETE ENG DATA SEE
ORIGINAL DEDICATION PLAT IN
BOOK 56, PAGE 63 OF RECORDS.

10' UTILITY & DRAINAGE EASEMENTS EACH
SIDE OF PROPERTY LINES AS INDICATED
BY DASHED LINES EXCEPT AS OTHERWISE
SHOWN.