

PART OF THE NE.1/4, OF SECTION 17, T.6N., R.1W., S.L.B. & M.

218

# LEAVITT FIELD SUBDIVISION

IN OGDEN CITY

TAXING UNIT: 25

SCALE 1" = 50'

SEE PAGE 70

## 2ND STREET

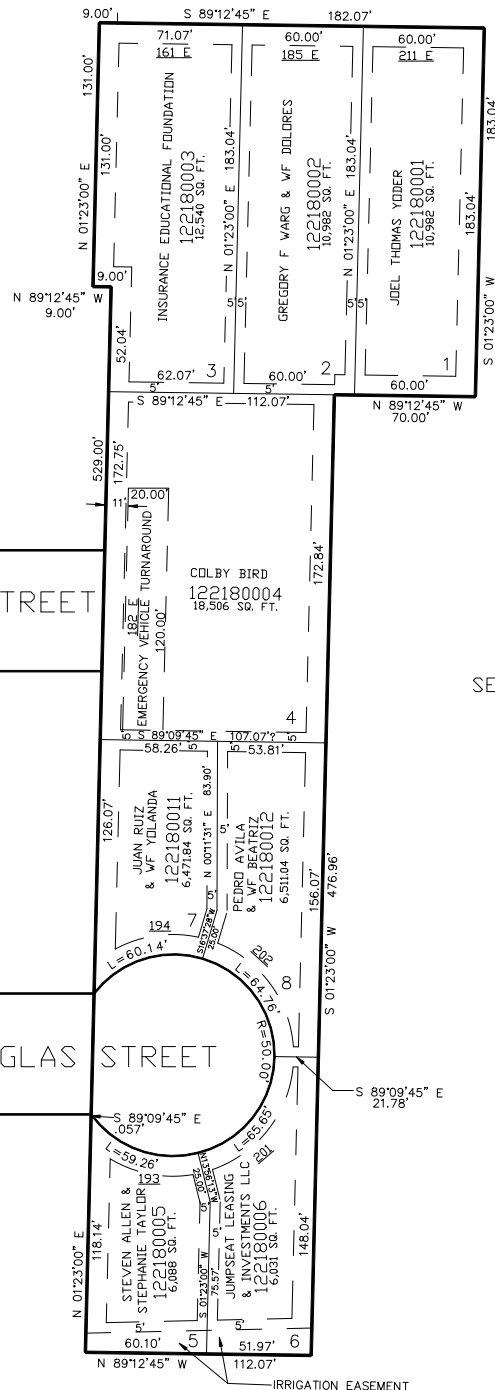
SEE PAGE 71

## 3RD STREET

SEE PAGE 70

## DOUGLAS STREET

10' UTILITY & DRAINAGE EASEMENTS EACH  
SIDE OF PROPERTY LINES AS INDICATED  
BY DASHED LINES EXCEPT AS OTHERWISE  
SHOWN.



SEE PAGE 70

\*FOR TAX PURPOSES ONLY\*

FOR COMPLETE ENG DATA SEE  
ORIGINAL DEDICATION PLAT IN  
BOOK 63, PAGE 41 OF RECORDS.