

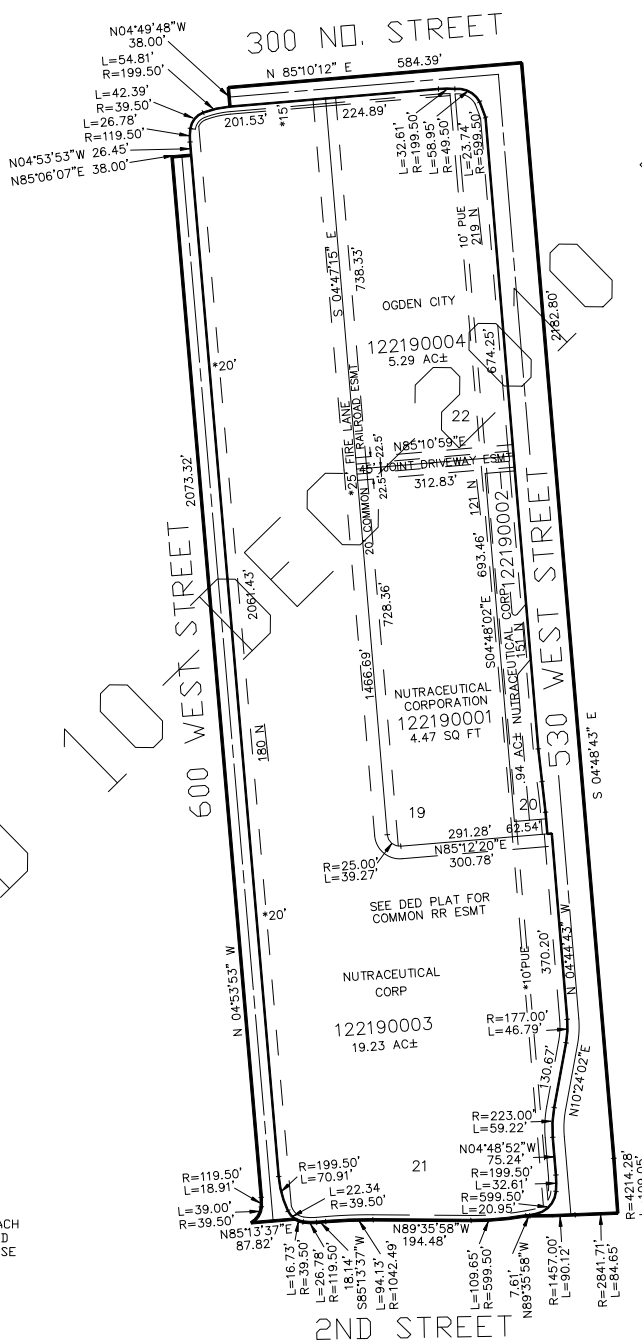
## BUSINESS DEPOT OGDEN PLAT 10 AMENDED

IN OGDEN CITY

TAXING UNIT: 359

SCALE 1" = 200'

SEE BOOK 11 PAGE 23



SEE PAGE 94

SEE PAGE 94

\*EASEMENT AS PER  
DEDICATION PLAT  
BOOK 56 PAGE 96  
NOT VACATED

FOR COMPLETE ENG DATA SEE  
ORIGINAL DEDICATION PLAT IN  
BOOK 64, PAGE 60 OF RECORDS.

10' UTILITY & DRAINAGE EASEMENTS EACH  
SIDE OF PROPERTY LINES AS INDICATED  
BY DASHED LINES EXCEPT AS OTHERWISE  
SHOWN.

2ND STREET

SEE PAGE 94

\*FOR TAX PURPOSES ONLY\*

LK 09-2006