

PART OF THE NW.1/4, OF SECTION 17,
AND THE NE. 1/4 OF SECTION 18, T.6N., R.1W., S.L.B. & M.

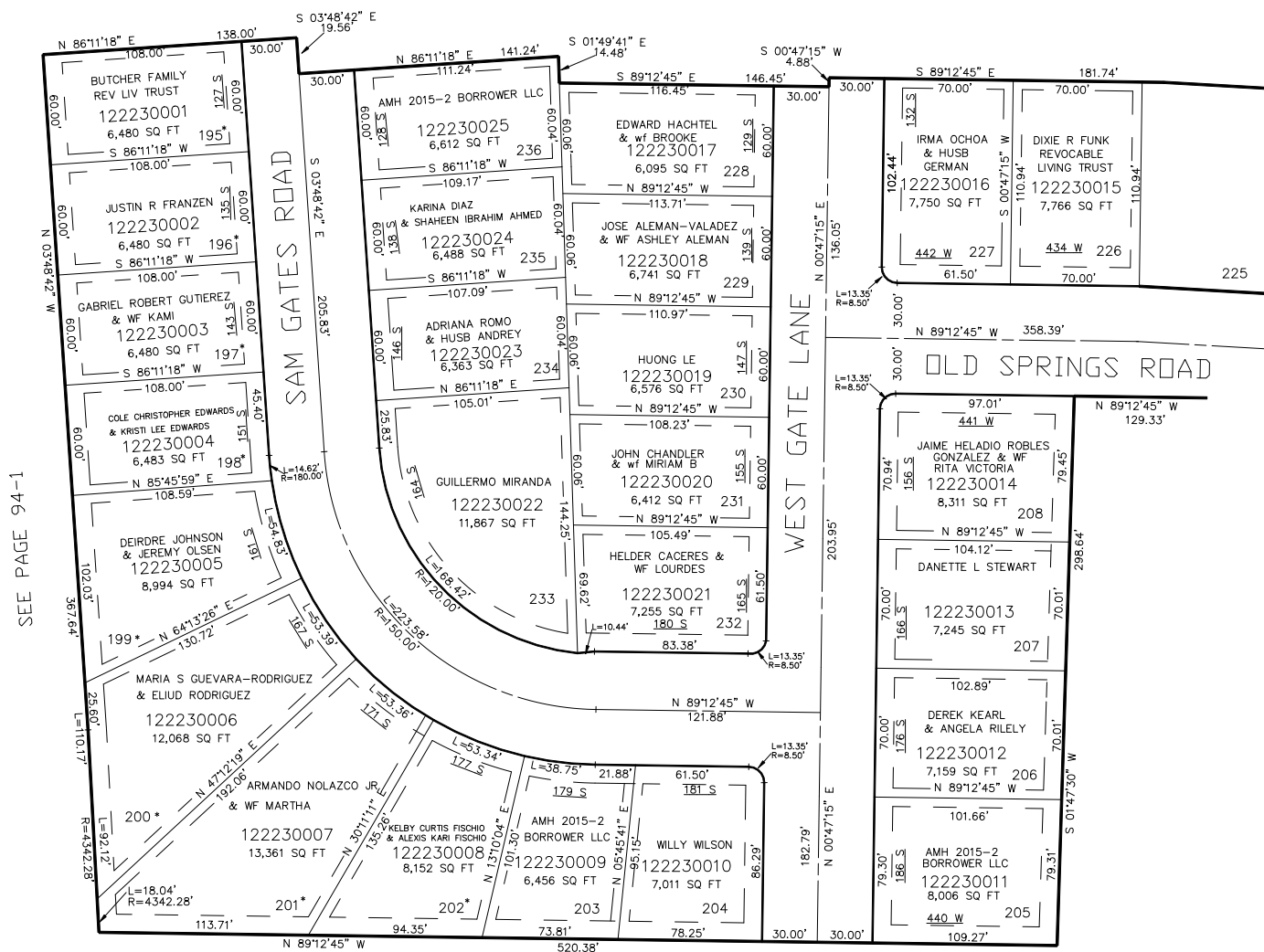
FORT BINGHAM PHASE 5

IN OGDEN CITY

SCALE 1" = 50'

TAXING UNIT: 25

SEE PAGE 94-1



*FOR ADDITIONAL STORM DRAIN & EASEMENT
INFORMATION PLEASE SEE DED PLAT BK 65 PG 83

10' UTILITY & DRAINAGE EASEMENTS EACH
SIDE OF PROPERTY LINES AS INDICATED
BY DASHED LINES EXCEPT AS OTHERWISE
SHOWN.

SEE PAGE 94-1

FOR COMPLETE ENG DATA SEE
ORIGINAL DEDICATION PLAT IN
BOOK 65, PAGE 83 OF RECORDS.

FOR TAX PURPOSES ONLY