

PART OF THE NE1/4, OF SECTION 19, T.6N., R.1W., S.L.B. & M.
BUSINESS DEPOT OGDEN – PLAT 13 LOT 32 1ST AMENDMENT

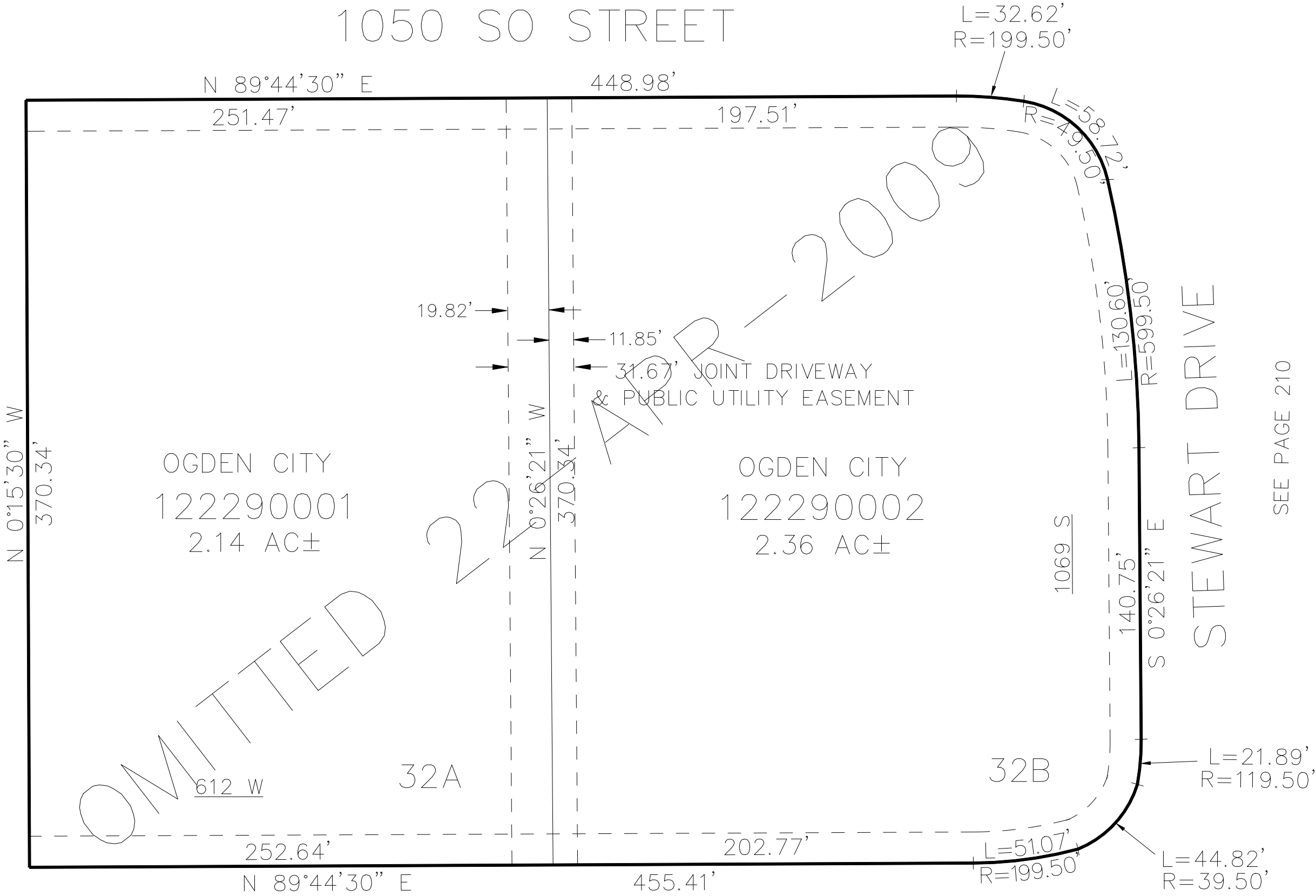
TAXING UNIT: 359

IN OGDEN CITY
SCALE 1" = 50'

SEE PAGE 210

1050 SO STREET

SEE PAGE 210



SEE PAGE 210

10' UTILITY & DRAINAGE EASEMENTS EACH
SIDE OF PROPERTY LINES AS INDICATED
BY DASHED LINES EXCEPT AS OTHERWISE
SHOWN.

FOR COMPLETE ENG DATA SEE
ORIGINAL DEDICATION PLAT IN
BOOK 68, PAGE 16 OF RECORDS.