

PART OF THE SE.1/4, OF SECTION 18 & A PART OF NE.1/4, OF SECTION 19, T.6N., R.1W., S.L.B. & M.

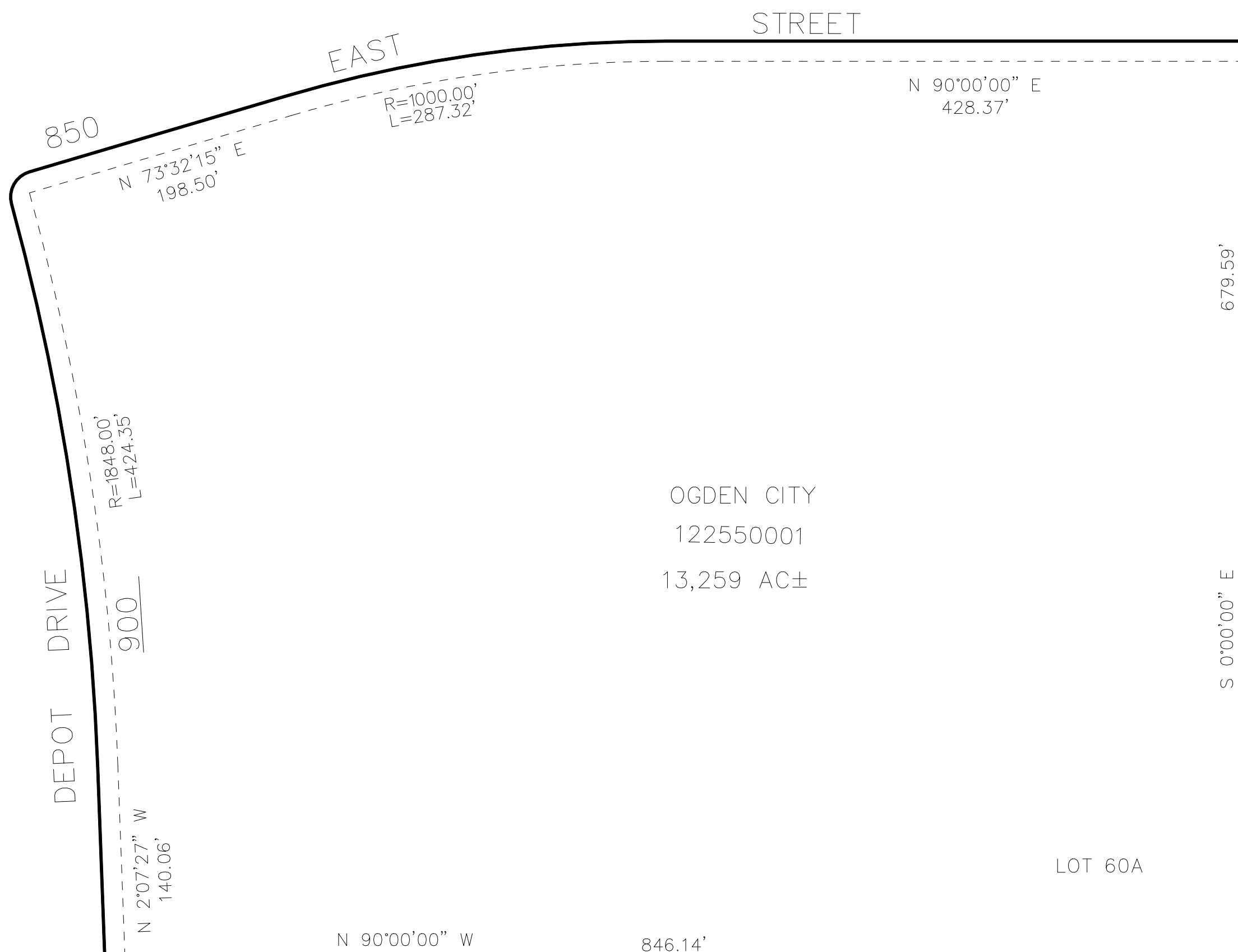
255

BUSINESS DEPOT OGDEN – PLAT 22 1ST AMENDMENT

TAXING UNIT: 25

IN OGDEN CITY
SCALE 1" = 80'

SEE PAGE 216



SEE PAGE 98

SEE PAGE 98

10' UTILITY & DRAINAGE EASEMENTS EACH
SIDE OF PROPERTY LINES AS INDICATED
BY DASHED LINES EXCEPT AS OTHERWISE
SHOWN.

FOR COMPLETE ENG DATA SEE
ORIGINAL DEDICATION PLAT IN
BOOK 75, PAGE 03 OF RECORDS.