

PART OF THE NE.1/4, OF SECTION 19, T.6N., R.1W., S.L.B. & M.

256

BUSINESS DEPOT OGDEN – PLAT 25

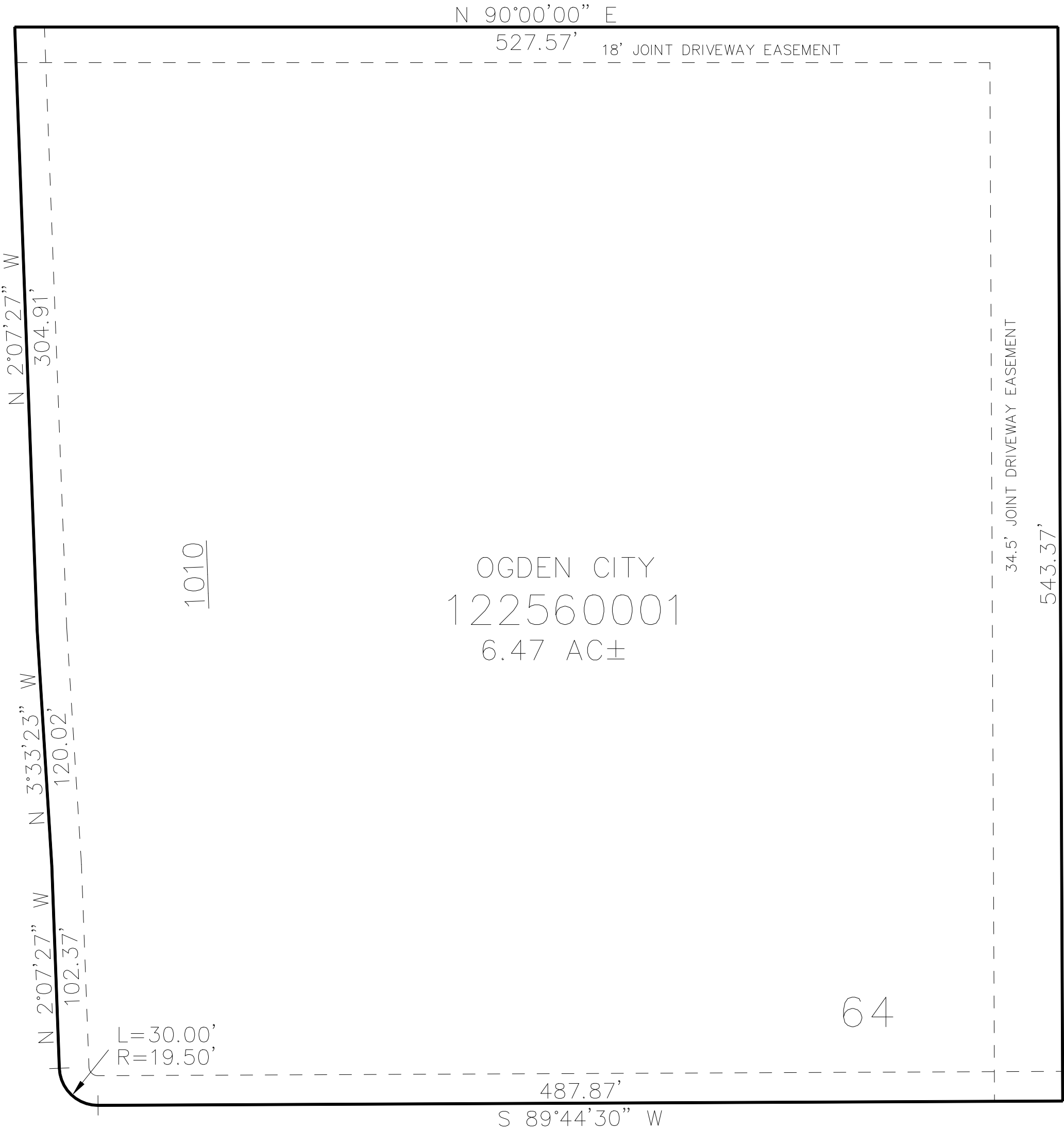
IN OGDEN CITY

TAXING UNIT: 25

SCALE 1" = 50'

SEE PAGE 98

DEPOT DRIVE



SEE PAGE 98

15' UTILITY & DRAINAGE EASEMENTS EACH
SIDE OF PROPERTY LINES AS INDICATED
BY DASHED LINES EXCEPT AS OTHERWISE
SHOWN.

SEE PAGE 98

1050 SOUTH STREET

FOR COMPLETE ENG DATA SEE
ORIGINAL DEDICATION PLAT IN
BOOK 75, PAGE 10 OF RECORDS.