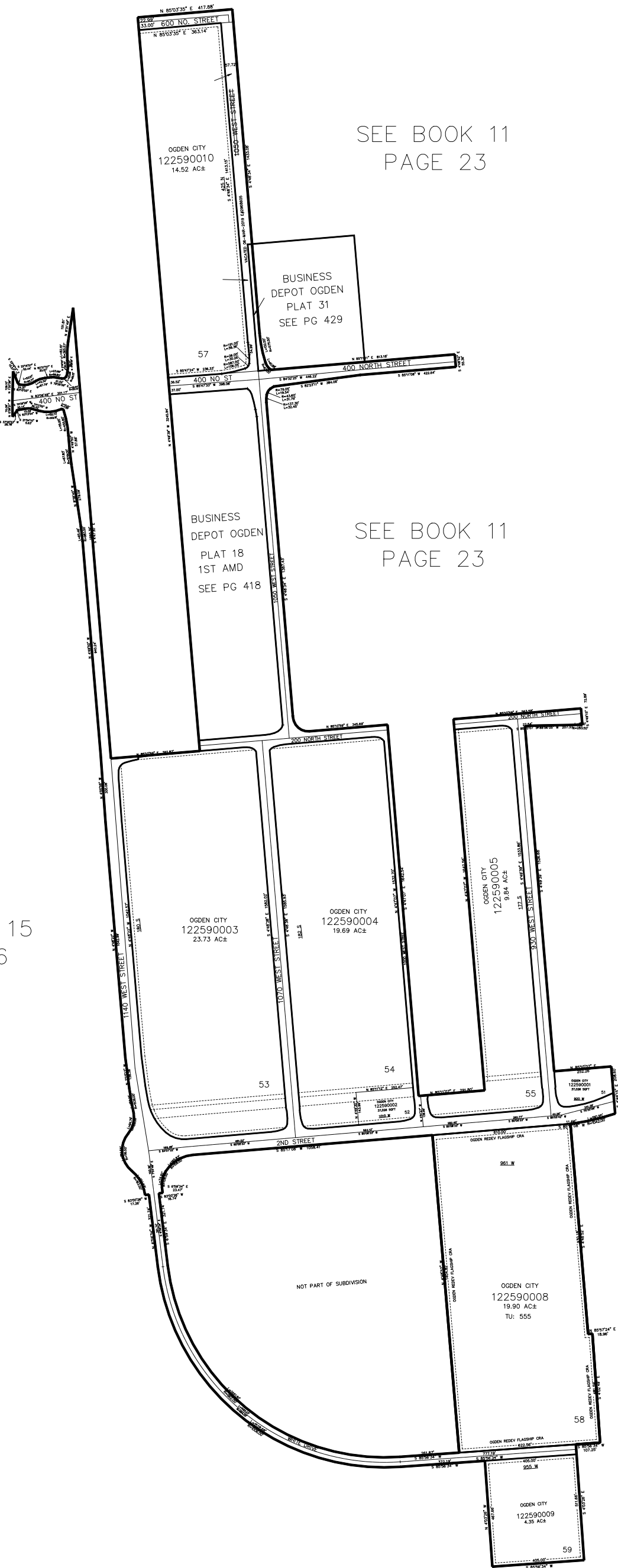


PART OF THE W.1/2, OF SECTION 12, & THE NE.1/4, OF SECTION 13, T.6N., R.2W., AND A
PART OF THE W.1/2, OF SECTION 7, & THE W.1/2, OF SECTION 18, T.6N., R.1W., S.L.B. & M.

BUSINESS DEPOT OGDEN PLAT 18

TAXING UNIT: 25, 555

IN OGDEN CITY
SCALE 1" = 500'



SEE BOOK 11
PAGE 23

SEE BOOK 11
PAGE 23

SEE BOOK 15
PAGE 36

SEE BOOK 12
PAGE 94

10' UTILITY & DRAINAGE EASEMENTS EACH
SIDE OF PROPERTY LINES AS INDICATED
BY DASHED LINES EXCEPT AS OTHERWISE
SHOWN.

FOR COMPLETE ENG DATA SEE
ORIGINAL DEDICATION PLAT IN
BOOK 76, PAGES 51-55 OF RECORDS.