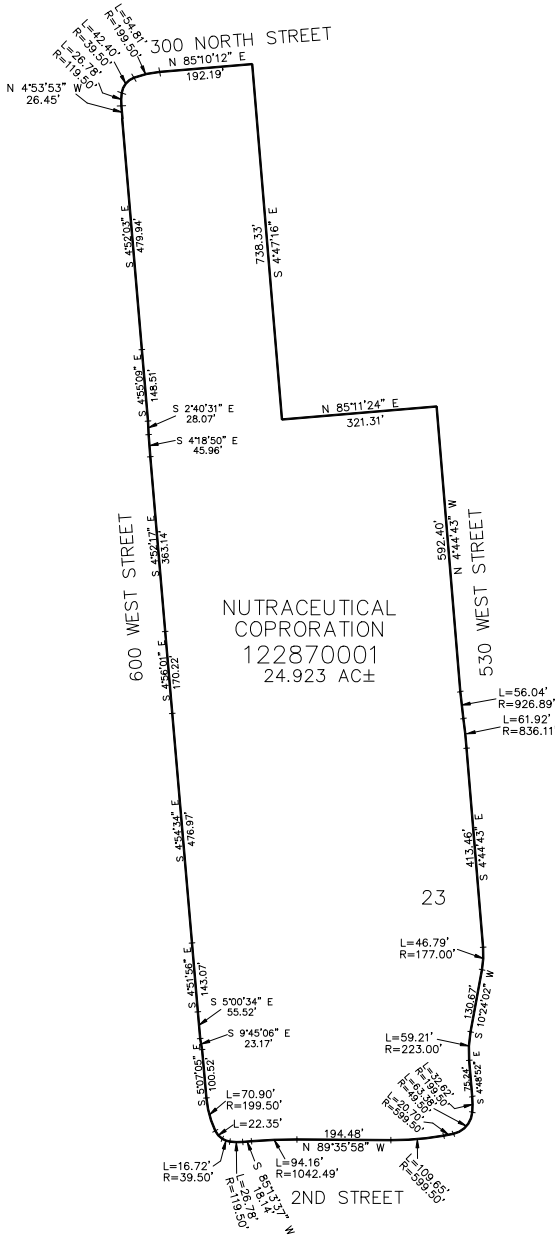


PART OF THE NE. 1/4, OF SECTION 18, & THE SE. 1/4 OF SECTION 7, T.6N., R.1W., S.L.B. & M.
NUTRACEUTICAL/BUSINESS DEPOT OGDEN – PLAT 10 3RD AMENDMENT

TAXING UNIT: 25

IN OGDEN CITY
SCALE 1" = 200'



SEE PAGE 243

SEE PAGE 243

10' UTILITY & DRAINAGE EASEMENTS EACH
SIDE OF PROPERTY LINES AS INDICATED
BY DASHED LINES EXCEPT AS OTHERWISE
SHOWN.

FOR COMPLETE ENG. DATA SEE
ORIGINAL DEDICATION PLAT IN
BOOK 92, PAGE 47 OF RECORDS.