

PART OF N.E. 1/4 OF SEC. 21, T.6N., R.1W., S.L.B. & M.

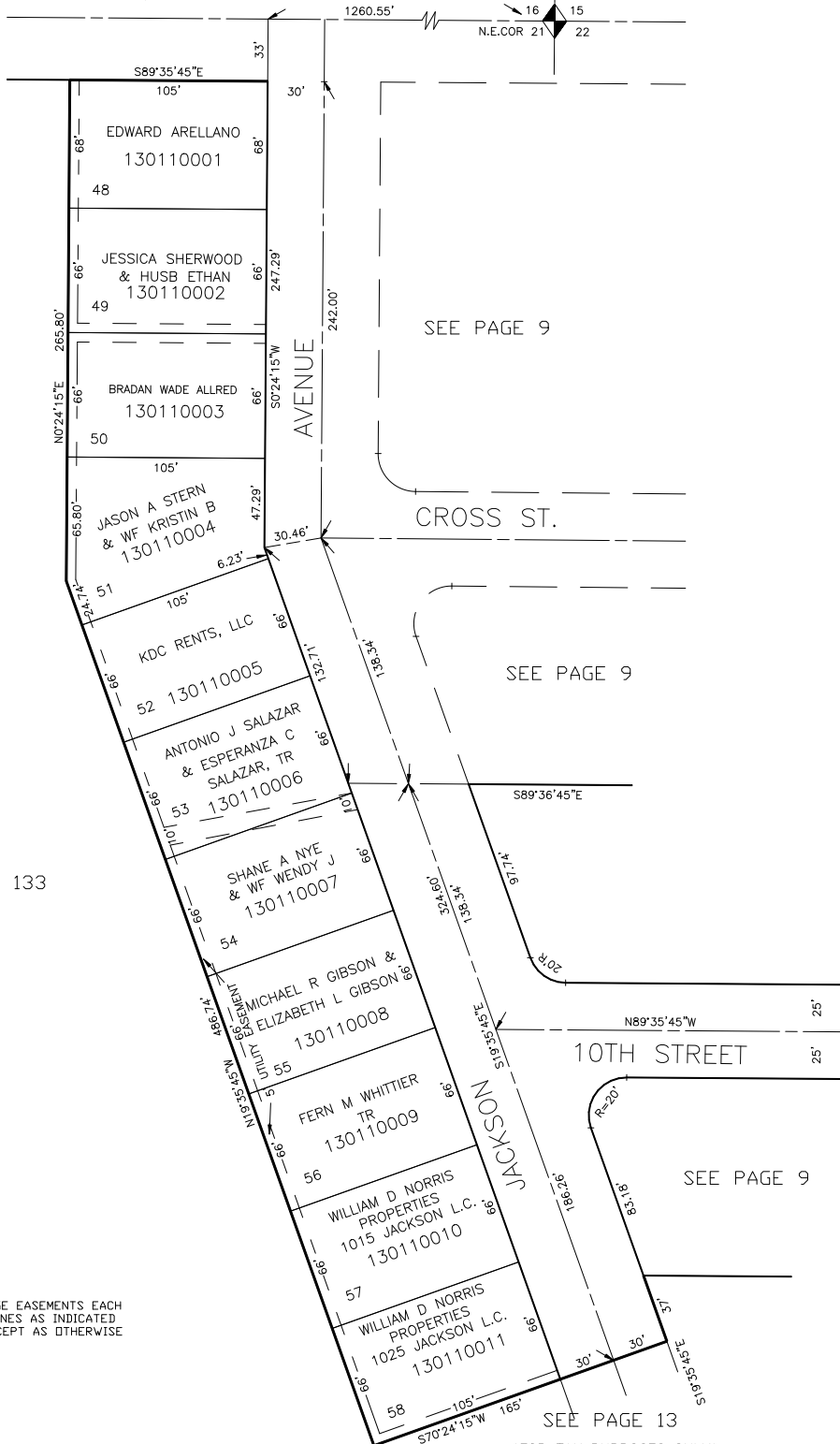
HUNTER HILL ADDITION NO. 4

TAXING UNIT: 25

SEE BOOK 12, PAGE 31

IN OGDEN CITY

SCALE 1" = 50'



FOR COMPLETE ENG DATA SEE
ORIGINAL DEDICATION PLAT IN
BOOK 11, PAGE 13 OF RECORDS.