

PART OF THE NE 1/4, OF SEC. 27, T.6N., R.1W., S.L.B. & M.

NOB HILL ADDITION

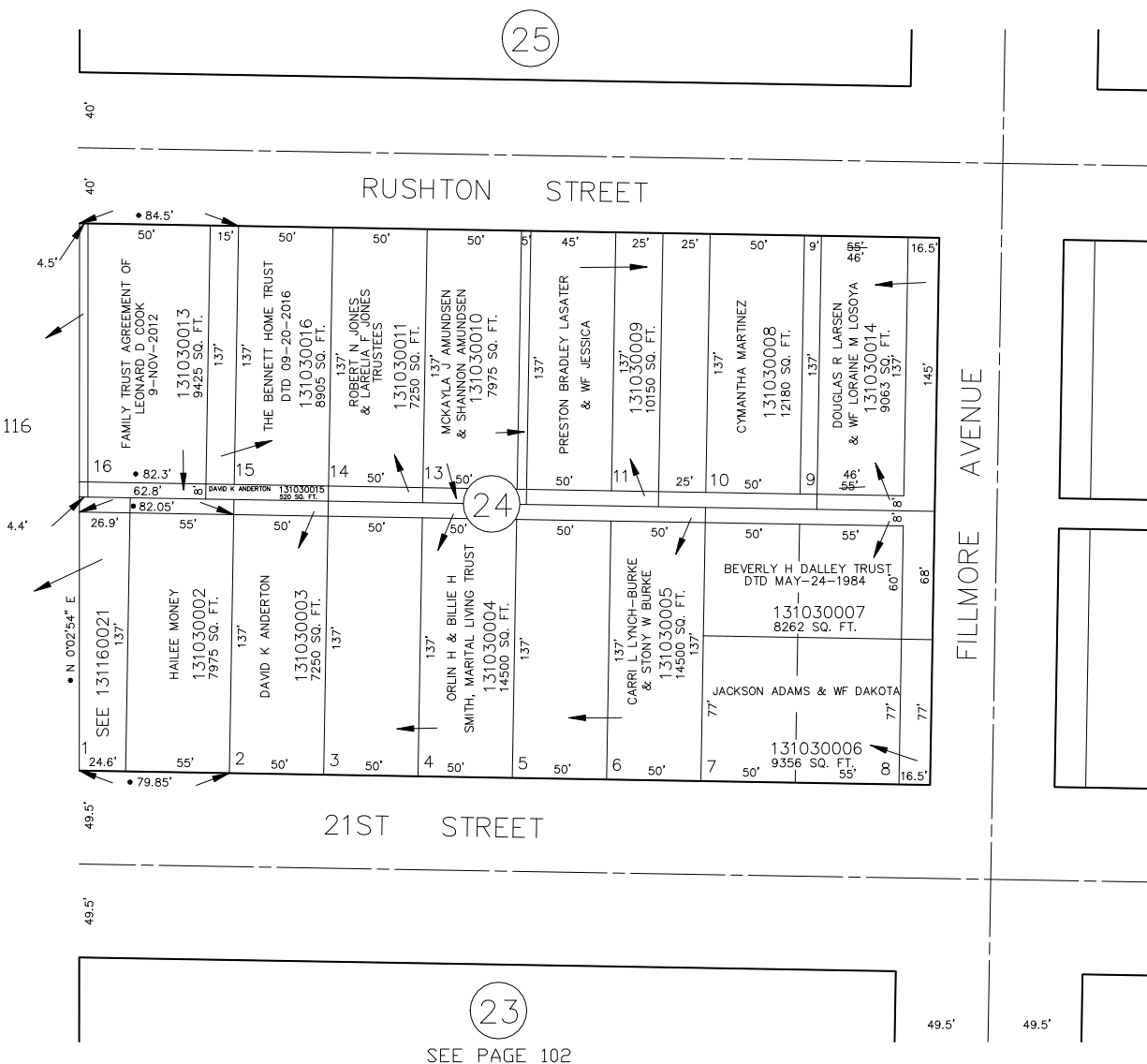
TAXING UNIT: 25

BLOCK 24
IN OGDEN CITY
SCALE 1" = 50'

SEE PAGE 86

SEE PAGE 116

SEE PAGE 104



• OGDEN CITY ENG. DEPT. PLATS

FOR COMPLETE ENG DATA SEE ORIGINAL DEDICATION PLAT IN BOOK 6, PAGE 1 OF RECORDS.